

HONDURAS

HUMANITARIAN NEEDS & RESPONSE SUMMARY 2023



Photo: OCHA/Vincent Tremeau

PEOPLE IN NEED

 **3.2M**

PEOPLE TARGETED

 **2.1M**

REQUIREMENTS (US\$)

 **\$280M**

OPERATIONAL PARTNERS

 **48**

NEEDS OVERVIEW

Overlapping vulnerabilities brought about by ongoing food insecurity, climate change and disasters, displacement and violence left 2.8 million people in Honduras with humanitarian needs in 2021. Conditions have only deteriorated in the wake of hurricanes Eta and Iota, the COVID-19 pandemic and the impact of the war in Ukraine on food and fuel prices.

Food insecurity is worsening, with at least 2.6 million people in Crisis (IPC Phase 3) or worse levels of food insecurity in 2022, more than a quarter of the population. Nearly half of all people live in poverty, leaving them without the capacities to cope with climate-related risks such as flooding, landslides and drought. August and September 2022 saw excess seasonal rains in the north-west, with October's Tropical Storm Julia in October then affecting many communities still reeling from the previous months' rains.

These recurring climate shocks and economic challenges are contributing to more and more people leaving the country; the 82,968 returnees recorded on the year (as of 31 October 2022) are a 41 per cent increase from 2021 figures

during the same period. Response capacities are becoming increasingly strained by a massive increase in irregular entries, with the National Migration Institute (INM) reporting 188,858 entries during 2022, or about 57,500 more entries than in the preceding 11 years combined.

Crime and insecurity are also contributing to worsening conditions. Honduras' homicide rate of 41.7 killings per every 100,000 inhabitants is the highest in Central America, despite being a decrease from 2020. Moreover, organized criminal activity continues to create mobility restrictions that further limit access to basic services.

Heading into 2023, there are now **3.2 million people in need of assistance**. Vulnerable populations such as women, children, adolescents, people on the move, indigenous and Afro-descendant people, people with disabilities and LGBTIQ+ people, among others, continue to face a disproportionate impact and require an inclusive response that accounts for their protection and dignity, while also strengthening their self-reliance.

KEY FIGURES

 **54%**

of the country's population of 9.6 million people are living in poverty conditions

 **2.6M**

people were in Crisis (IPC Phase 3) or worse levels of food insecurity in 2022

 **18.7%**

of children across Honduras suffer from chronic malnutrition, with rates rising in rural areas

 **1.5M**

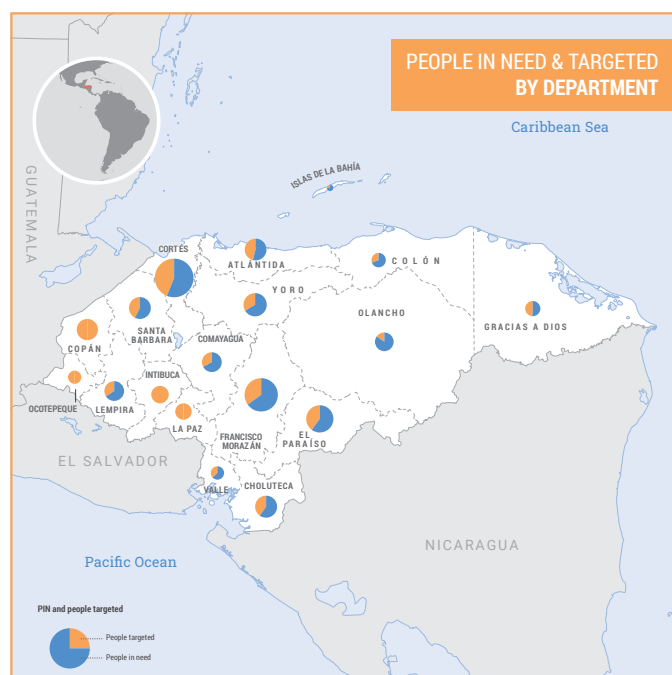
children and adolescents in Honduras are out of the school, nearly half of all students

 **41.7**

people per every 100,000 inhabitants were murdered in 2021, double the regional rate of 19.2

 **188K**

migrants entered Honduras irregularly in 2022, about 57,500 more than all entries between 2010-2021



RESPONSE

The Humanitarian Country Team (HCT) seeks to continue multi-sectoral response to meet the needs of vulnerable people through the Humanitarian Response Plan (HRP) 2023. The HRP is **targeting 2.1 million people for assistance** and is seeking to mobilize **US\$280 million** for implementing response actions between January and December 2023, a response cost increase from the \$222 million requested for the previous HRP that reflects Honduras' mounting needs.

The HCT, whose members consist of United Nations agencies, funds and programmes, national and international NGOs, international cooperation agencies and the International Red Cross and Red Crescent Movement, will structure their support for the Government-led response under eight clusters and four areas of responsibility (AoRs), with the UN Office for the Coordination of Humanitarian Affairs (OCHA) managing intersectoral coordination efforts.

HRP 2023 response projects are prioritizing areas most affected by food insecurity, violence, displacement, climate change and disasters and will place a special emphasis on vulnerable populations that are suffering a disproportionate impact.

STRATEGIC OBJECTIVE 1

Contribute to protecting and saving the lives of people affected, or at risk of being affected, by the impact of food insecurity, violence, human mobility, climate change and disasters, through support for human rights and intersectoral humanitarian assistance, with a focus on protection, age, gender and diversity.

STRATEGIC OBJECTIVE 2

Support and strengthen sustainable solutions that contribute to promoting timely, coordinated and localized access to rights, self-reliance and resilience for people in need or at risk, taking their gender, age and diversity into account as a means of linking humanitarian assistance and development.

PEOPLE IN NEED / PEOPLE TARGETED / REQUIREMENTS BY CLUSTER

Sector	People in need & targeted / women targeted			Requirements (US\$)
Health	1.2M	386K	107K	\$2.6M
- SRH*	437K	136K	122K	\$2M
Protection	1.5M	443K	272K	\$34.7M
- Child Protection*	546K	310K	-	\$15M
- GBV*	984K	380K	230K	\$13.4M
Shelter	192K	12.9K	7.7K	\$8.2M
Food Security	2.6M	2.1M	693K	\$132.2M
- Nutrition*	551K	386K	84K	\$21.2M
WASH	1.8M	646K	329K	\$32.3M
CCCM	383K	193K	58K	\$5.7M
Education	319K	207K	104K	\$5.3M
Early Recovery	706K	104K	62.5K	\$7M
Coordination	-	-	-	\$800K

* Area of Responsibility

HPC	People in need & targeted	Requirements (US\$)	Trend in 2023
2021-2022	1.8M (in need) / 2.8M (targeted)	\$66.1M (2021) \$155.3M (2022)	People in need + 400k ↗ People targeted + 300k ↗ Requirements (US\$) + \$125M ↗
2023	2.1M (in need) / 3.2M (targeted)	\$280M	



SECTOR OBJECTIVES & RESPONSE

Photo: OCHA/Marc Belanger

HEALTH

PEOPLE IN NEED

1.2M

PEOPLE TARGETED

385.6K

REQUIRED

\$2.6M

Health Sector response seeks to improve access to quality health services in emergencies by promoting health, mental health, sexual and reproductive health (SRH), infection prevention and control and response to GBV. Partners will mobilize technical and financial resources towards rehabilitating and restoring operational capacities of healthcare centres that have been affected during emergencies. Activities include damage assessments and analyses, building capacity among healthcare workers and coordinating with other sectors and Honduras' Health Secretariat at the national and local levels to provide joint response to health needs.

PROTECTION

PEOPLE IN NEED

1.46M

PEOPLE TARGETED

443K

REQUIRED

\$34.7M

The Sector will provide assistance and specialized services for protection risks and rights violations and promote the consolidation of legal protection frameworks. Partners will support community and organizational structures in creating resilience by strengthening knowledge, skills and capacities for identifying and mitigating protection risks. Partners will work to strengthen case management and assistance services, assist at-risk people and households, support State actors and offices in improving protections services and their border presence and services and promote Accountability to Affected People (AAP) mechanisms.

GENDER-BASED VIOLENCE *

PEOPLE IN NEED

948K

PEOPLE TARGETED

380K

REQUIRED

\$13.4M

The Gender-Based Violence (GBV) AoR aims to close response access gaps for GBV survivors in priority municipalities by scaling up the availability of specialized services, such as psychosocial support and GBV case management, and help localize response actions by strengthening municipal-level institutional capacities. The AoR will also work with communities to strengthen GBV prevention, referral and response mechanisms. Partners will focus efforts through static services, mobile teams and remote response.

SEXUAL & REPRODUCTIVE HEALTH*

PEOPLE IN NEED

437K

PEOPLE TARGETED

136K

REQUIRED

\$2M

The SRH AoR will contribute to improving access to essential SRH services and supplies for vulnerable women of reproductive age. These include maternal health services, family planning and cervical/uterus cancer screening at primary care centres and hospitals, as well as strengthening community actions. The AoR is also seeking to ensure the implementation of the Minimum Initial Service Package (MISP) for in emergencies, including clinical management of cases of sexual violence and strengthening essential SRH services in municipal-level healthcare centres. Contributing to institutional and community capacity building is also a priority.

CHILD PROTECTION *

PEOPLE IN NEED

546K

PEOPLE TARGETED

310K

REQUIRED

\$15M

The Child Protection AoR seeks to ensure access to child and adolescent protection services, strengthen these systems' early identification, response and risk mitigation capacities and build children's and adolescents' resilience through safe environments. The AoR will provide specialized mental health and psychosocial support services, as well as legal guidance for State offices. Partners will also disseminate violence prevention messaging, implement referral routes and support intersectoral efforts towards family reintegration, return to school and preventing sexual exploitation and abuse, among others.

SHELTER

PEOPLE IN NEED

192K

PEOPLE TARGETED

12.9K

REQUIRED

\$8.2M

The Shelter Sector will support people who have been displaced, or are at risk of displacement, due to violence, climate change and disasters and contribute to communities' recovery and ability to mitigate future impacts on shelters and settlements. Partners seek to build individual and collective response capacities and rehabilitate community infrastructure. Response activities include workshops on needs analysis, vulnerability and capacity assessments and *Build Back Better*, as well as building transitional housing and rehabilitating, improving and repairing homes.

* Area of Responsibility



FOOD & NUTRITION SECURITY

PEOPLE IN NEED

2.6M

PEOPLE TARGETED

2.1M

REQUIRED

\$132M

Food and Nutrition Security Sector response seeks to improve food availability, access and consumption, restore and sustain livelihoods and promote anticipatory action systems with a focus on drought. Partners aim to strengthen individual and institutional capacities in national-, regional- and local-level coordination of key actors before the impact of a crisis to foster an adequate crisis response and recovery of livelihoods. Response activities include in-kind food assistance and cash-based transfers and activities targeting the rehabilitation of agricultural and farming livelihoods.



WATER, SANITATION & HYGIENE

PEOPLE IN NEED

1.84M

PEOPLE TARGETED

646K

REQUIRED

\$32.3M

The Water, Sanitation and Hygiene (WASH) Sector will work to ensure access to safe water, promote climate resilience and strengthen institutional capacities for applying sustainable solutions, WASH risk management and climate change adaptation. Response will focus on equitable water access, distribution of safe water storage and treatment supplies, access to hygiene supplies, rebuilding water storage systems, identifying climate change adaptation gaps and work with other sectors to plan WASH infrastructure in centres that respond to affected people.



EDUCATION

PEOPLE IN NEED

319K

PEOPLE TARGETED

207K

REQUIRED

\$5.3M

Education Sector partners are prioritizing response in areas most affected in terms of WASH, child protection and nutrition. Response activities include consulting affected educational communities, bringing infrastructure up to safe standards, scaling up educational access for affected children and adolescents and ensure their safe return to school, setting up temporary learning spaces, strengthening institutional capacities for maintaining education in emergencies, and implementing educational recovery programs for children and adolescents on the move, among others. The Sector will also work on emergency prevention and response in schools as a cross-cutting strategy.



NUTRITION*

PEOPLE IN NEED

551K

PEOPLE TARGETED

386K

REQUIRED

\$21.2M

The Nutrition AoR, as part of the Food and Nutrition Security Sector, is focused on reducing morbidity and mortality linked to acute undernutrition and micronutrient deficiencies among children and pregnant or breastfeeding women. The AoR is developing activities for detecting and managing malnutrition in all its forms such as Blanket Supplementary Feeding Programmes (BFSP), screening for moderate acute malnutrition (MAM) and severe acute malnutrition (SAM) and multiple micronutrient supplements for children under age 5 and pregnant or breastfeeding women.



CAMP COORDINATION & CAMP MANAGEMENT

PEOPLE IN NEED

383K

PEOPLE TARGETED

193K

REQUIRED

\$5.7M

The Camp Coordination & Camp Management (CCCM) Sector seeks to improve shelter infrastructure to reduce vulnerabilities to disasters and protection risks, identify referral routes for specialized case management in SRH, GBV, child protection, protection against sexual exploitation and abuse (PSEA) and discrimination and strengthen institutional CCCM technical capacities. Response will include distribution of non-food items (NFIs), as well as working to improve physical infrastructure and collaborating with other sectors working camps to provide specific services. Partners will work with State actors to develop sustainable solutions and camp and settlement closure strategies.



EARLY RECOVERY

PEOPLE IN NEED

706K

PEOPLE TARGETED

104K

REQUIRED

\$7M

The Early Recovery Sector response is primarily concerned with recovering livelihoods, especially in rural agricultural households, implementing community-level livelihoods resilience mechanisms, strengthening risk management capacities and the economic empowerment of women, young people and LGBTIQ+ people. Sector partners will carry out response through cash transfers and technical support for creating and reactivating income-generating activities and agricultural lifestyles, promoting household participation in livelihood resilience and risk management mechanisms and relevant short-term crisis response as needed.

* Area of Responsibility