

**146,871** registered returnees

**24,654** biometric registrations

**964** identified at the Adré border crossing in the last two weeks

**54%** are female

**67%** are children

**2,454** are pregnant

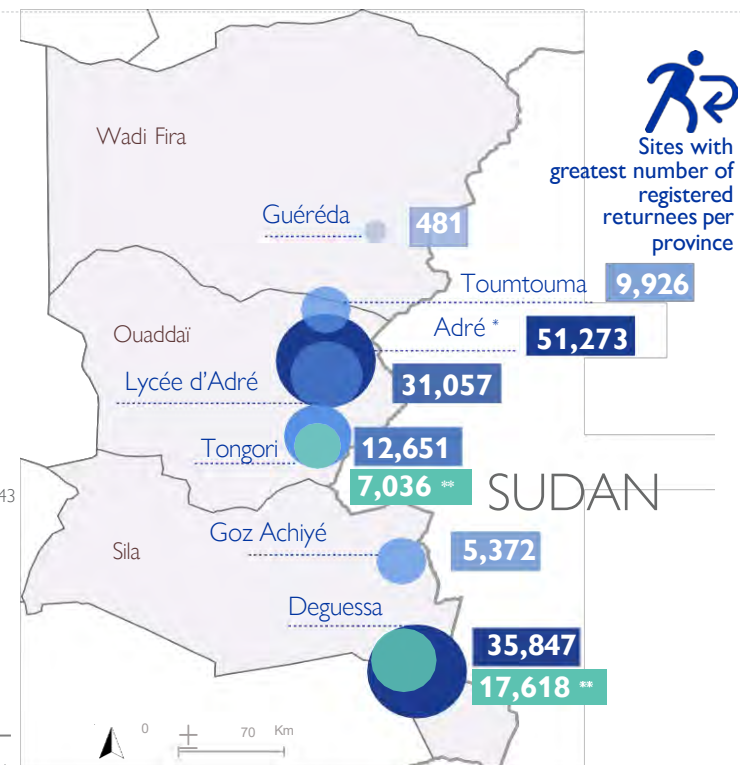
**7,197** are breastfeeding

**222,743** returnees in Chad (estimation)

**240,000** returnees projected to reach Chad by december 2024 (estimation)

**53** locations<sup>1</sup> with returnees identified across 3 provinces

1 - IOM has registered returnees in 85% (45) of these locations

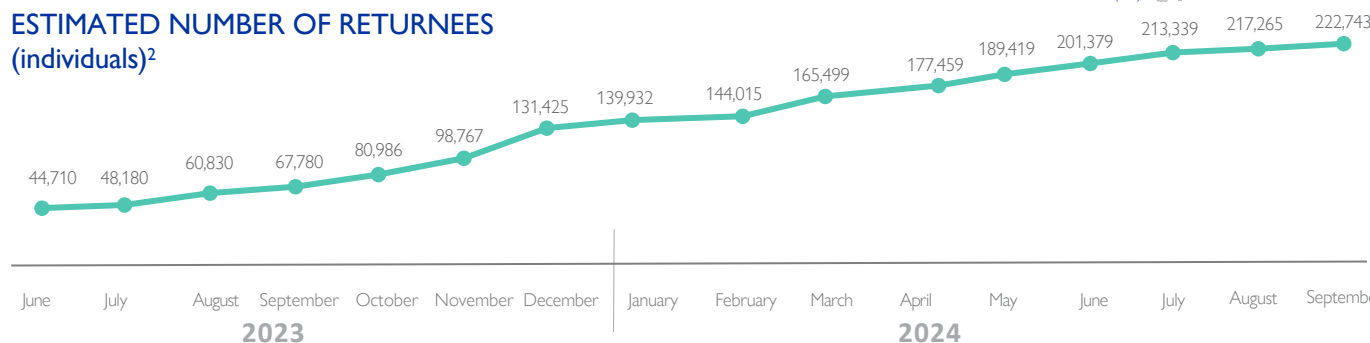


This map is for illustration purposes only. The depiction and use of boundaries, geographic names and related data shown on maps and included in this report are not warranted to be error free nor do they imply judgment on the legal status of any territory, or any endorsement or acceptance of such boundaries by IOM.

\* inclusive of Lycée d'Adré. Otherwise, sums up to 20 216 across the 10 locations around Adré

\*\* Biometric registration completed in Sila and Ouaddaï provinces

### ESTIMATED NUMBER OF RETURNEES (individuals)<sup>2</sup>



2 - IOM projections and estimates on returnees are evaluated every six months.

### HIGHLIGHTS

An estimated 910,000 people have crossed into Chad since the onset of the crisis in Sudan, of which 222,743 are Chadian returnees as of end of September 2024. IOM expects this number to rise to 240,000 through to December 2024 due to ongoing conflict and food insecurity in Darfur.

### BACKGROUND

Returnees are Chadian nationals who were living in Sudan and have been displaced back to their home country where they lack the resources to rebuild their lives. Returnees are living either in displacement sites or within host communities. They are in urgent need of food, water, sanitation and hygiene, shelter, household items, health, and protection. IOM is the lead agency for the returnee response, in close coordination with the Government of Chad, local authorities, UN agencies, and local and international NGOs.

### PRIORITY NEEDS



Humanitarian assistance (WASH, Shelter, NFI, Protection)

**USD 35 345 000**



Resilience and livelihoods

**USD 10 000 000**



Displacement Tracking data

**USD 1 500 000**

## SINCE THE BEGINNING OF THE CRISIS THE IOM SUPPORTED:

Disclaimer: Assistance is distributed on a household level, where number of individuals reached may be subject to change and refined once a distribution has been completed.



## EMERGENCY ASSISTANCE PROVIDED TO DATE

*IOM is leading life-saving assistance for Chadian returnees from Sudan via multisectoral interventions.*

## IOM HAS SUPPORTED:

- 139,112 returnees with multisectoral assistance in 30 sites across Ouaddaï and Sila provinces since the beginning of the crisis.
- 4,968 transitional shelters benefitting over 26,000 of the most vulnerable returnees and is constructing an additional 1,200 shelters in the returnee sites of Degoussa in Sila and Tongori in Ouaddaï.
- The construction of 500 brick homes in a continuous effort to strengthen protection and social cohesion efforts as well as supporting resilience by assisting returnees in replacing their transitional shelters.
- 94,861 returnees by creating 10 new boreholes (thermic, solar-powered, and manual), 639 latrines, and distributing 8,489 essential WASH kits.
- 7,879 households (41,624 individuals) to carry out their most essential needs through multipurpose cash assistance.
- 20,723 household (110,406 individuals) to carry out essential household tasks through non-food items distributions.
- In collaboration with WFP, 105,850 returnees with food distribution across the provinces of Ouaddaï and Sila.

## REPORTING PERIOD UPDATES

## HUMANITARIAN ASSISTANCE AND COORDINATION

*As the lead agency for the humanitarian response for returnees, IOM continues to coordinate with national, international, and government partners (CNARR, local authorities) to deliver vital services to vulnerable returnees in the east of Chad. IOM continues to support and coordinate the delivery of WASH, food, protection, health, shelter, NFI, and education assistance in returnee sites by national and international partners including UNICEF, UNFPA, WFP, Concern Worldwide, INTERSOS, COOPI, ACTED, Help Tchad, and the Chadian Red Cross.*

- IOM has recently scaled up its Protection and Mental Health and Psychosocial Support (MHPSS) team to reach new returnee communities with essential community-based and individual support. In the past two weeks, IOM conducted 37 focus group discussion in multiple sites in Ouaddaï and Sila that have not received Protection and MHPSS assistance so far to understand the protection needs and vulnerabilities of the communities.
- IOM continued its wide range of Protection and MHPSS activities in Tongori and Degoussa sites, providing individual assistance and referrals, sensitisation, support to community representation committees, skill-sharing and livelihood activities, and recreational activities.

## DISPLACEMENT DATA &amp; KNOWLEDGE SHARING

*IOM's Displacement Tracking Matrix (DTM) is a leading tool to monitor and analyse displacement flows. IOM DTM teams, including CNARR agents, locally recruited and trained enumerators, are deployed across Sila and Ouaddaï provinces on an ongoing basis to identify and register vulnerable returnee households, including newly arrived households as well as households in remote locations, not previously identified. IOM's data on displacement and needs feeds knowledge sharing within the humanitarian community to coordinate and target lifesaving assistance to those in need. Biometric registration has been recently completed in Degoussa (Sila), in order to update and better identify the returnees currently living in the area.*

- IOM continues to identify returnee households at the border crossing of Adré. Over the past two weeks, IOM has identified 171 households (964 individuals), 88% of which were headed by a woman. The households were primarily coming from Al Geneina (46%) and Al Fasher (26%). They fled Sudan primarily due to insecurity – either conflict or preventive movement (57%) and lack of food (33%).
- IOM registered 230 households (1,809 individuals) via its registration centre at Lycée d'Adré site, including households identified at the border and households referred to IOM by UNHCR.

## RESILIENCE AND POST-EMERGENCY

*IOM is developing its intervention in support of the longer-term resilience and recovery of Chadian returnees and the communities hosting them.*

- IOM is continuing the construction of a new local marketplace in Degoussa, in accordance with the priorities expressed by the returnee and host communities. It is also continuing the creation of a community-run garden for the production of local produce in order to support livelihoods and self-reliance.
- In Toumtouma, IOM has launched the construction of a wall fence for the community health centre in order to protect vital medical equipment and medication from theft. In the coming weeks, IOM will also start the construction of two boreholes in villages near Toumtouma hosting large numbers of returnees and host community members.

ARRIVALS IN THE LAST TWO WEEKS



171

households



964

individuals

IOM and CNARR monitor daily arrivals of returnees from Sudan passing through the Adré border crossing to collect basic demographic data and provide an estimate of daily displacement flows. The data provides an overview of trends and the volume of flows of returnees but is for information only and has some limitations. While individuals undergo an initial screening by CNARR to determine the status, the additional responses provided by the returnees have not been formally verified. Arrivals through other border crossing points are not monitored and the temporal coverage is limited to working days and does not include weekends or night coverage, hence actual arrival numbers are likely higher. Due to these limitations, the data collected can therefore not be generalized to represent the entire returnee population, as they only present the unique situation of those crossing this boarder point during this window. Please also note that returnees are not registered at this point but are referred to the IOM registration centre at the lycée Adré, where in-depth evaluation is carried out, jointly with CNARR, before being registered.

SUMMARY STATISTICS



46%

Arrived from Al Geneina



88%

are female-headed households



5.6

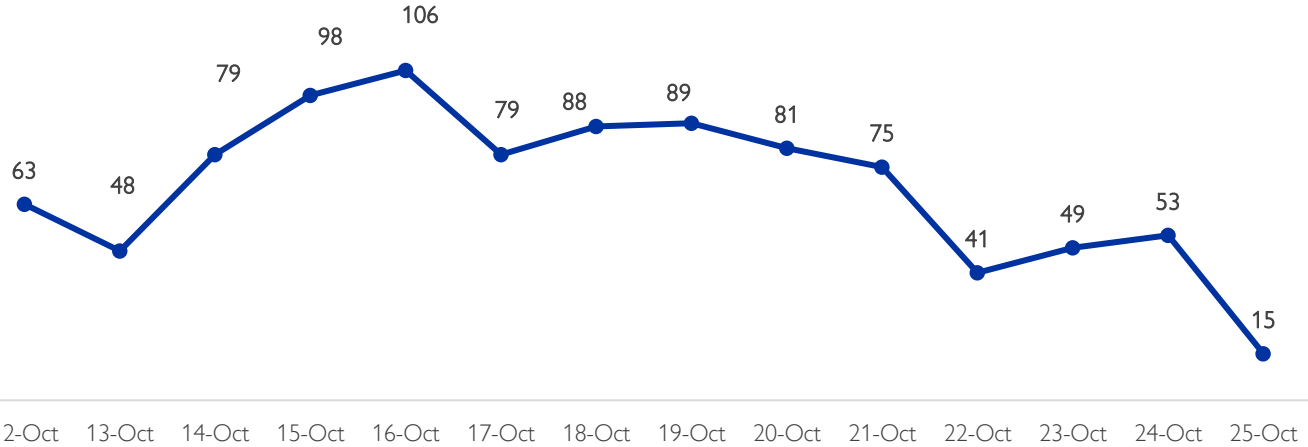
average household size



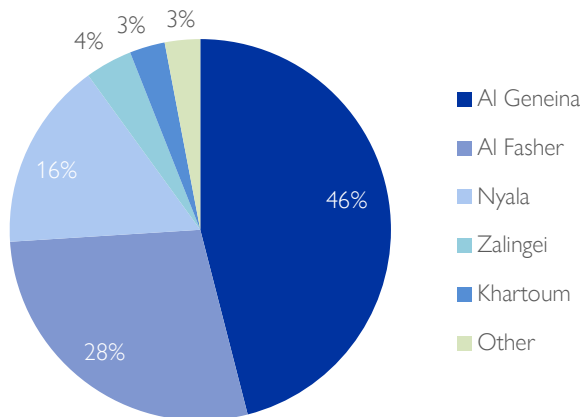
57%

mention insecurity as reason for displacement

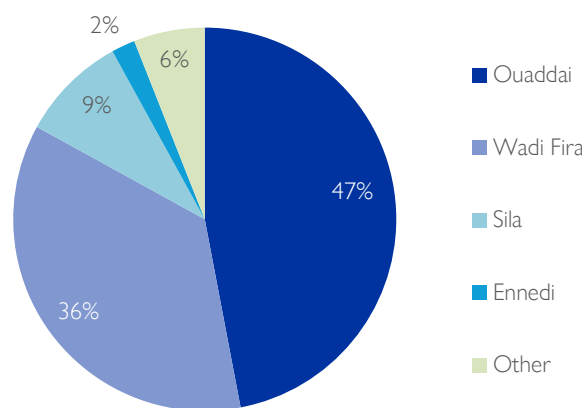
NUMBER OF INDIVIDUAL ARRIVALS PER DAY



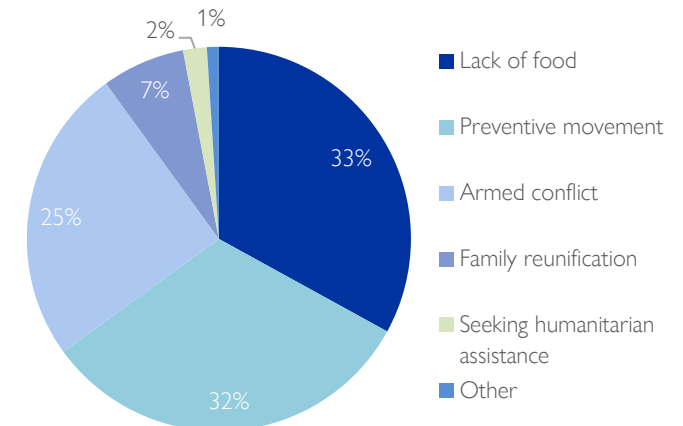
LOCATION OF DEPARTURE (SUDAN)



PROVINCE OF ORIGIN (CHAD)



PRIMARY REASON FOR DEPARTURE



## USE & DEFINITION OF BIOMETRIC DATA:

The use of biometrics in registration processes can help to collect data to identify vulnerable individuals who may require additional assistance. This may require several and ongoing evaluations. In the case of Deguessa and Tongori, these assessments were completed as a first initial phase and would require future updates to keep abreast of population movements and its evolution. IOM underlines the importance of using biometrics responsibly and, notably, of ensuring the protection of personal data of beneficiaries and respect for the rule of law. When processing biometric data, IOM ensures that the data is collected in a lawful and fair manner with the consent of beneficiaries, and that the purpose of the processing is specified and legitimate.

## METHODOLOGY & LIMITATIONS:

The data presented on registrations is not exhaustive and does not contend that all returnees are accounted for, nor is not representative across provinces. The returnee data compiled above, presents a summary of all assessments conducted on a spontaneous and sporadic manner based upon knowledge of movements at different points in time and may be outdated. The registration centre at the lycée d'Adré is the only continuous registration site of IOM. As of the 12th of July 2024, a pre-identification of returnees is conducted at the border, before a proper evaluation and registration takes place at the centre.

## Biometric fixing of returnees in Deguessa



Biometric fixing of returnees in Deguessa / Tchad, June 2024  
© IOM 2024 / Allarassem Koumangar



**USAID**  
FROM THE AMERICAN PEOPLE



Schweizerische Eidgenossenschaft  
Confédération suisse  
Confederazione Svizzera  
Confederaziun svizra

Swiss Agency for Development  
and Cooperation SDC



For more information, please  
contact

KAMATE MICHEL, Emergency  
Coordinator a.i. (Sudan Response)

Email: [MKAMATE@iom.int](mailto:MKAMATE@iom.int)

For the complete dashboards please check the [DTM WEBSITE](#)