

# LEBANON EMERGENCY RESPONSE

ACTIVITY UPDATE #3

01 - 14 NOVEMBER 2024



## SITUATION OVERVIEW

Since the escalation of hostilities in mid-September 2024, displacement in Lebanon has surged from over 110,000 internally displaced persons (IDPs) on 17 September to more than 880,000 IDPs by 13 November 2024. Many families have also sought refuge across borders, particularly in Syria and Iraq. In support of the government-led emergency response, the humanitarian community launched an interagency flash appeal for USD 426 million to assist 1 million people through December. [IOM requires USD 32.46 million](#) for urgent lifesaving assistance in the areas of shelter, basic needs, health, protection, site management and coordination, and the Displacement Tracking Matrix (DTM).



881,326

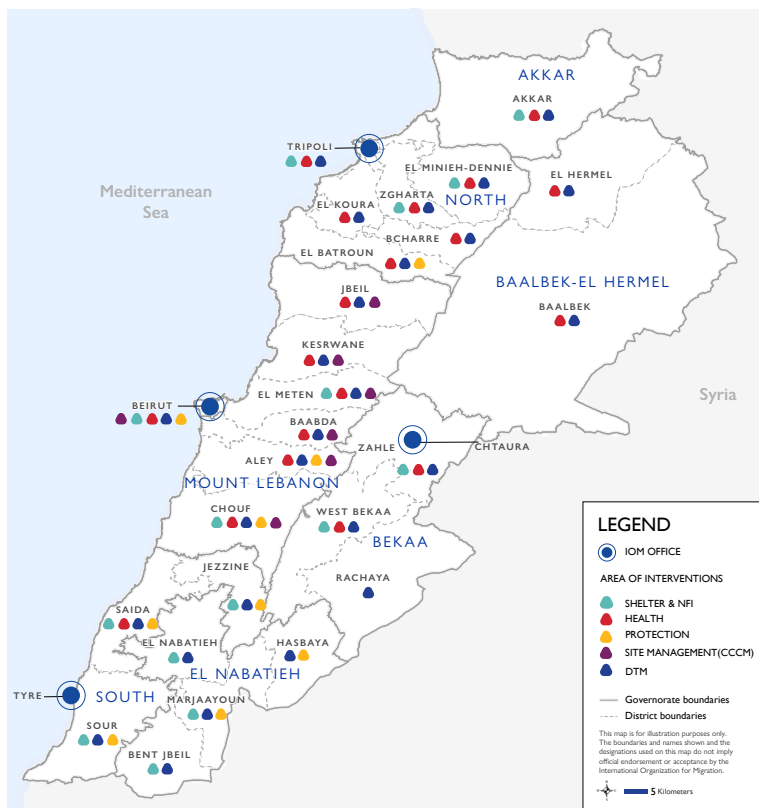
people internally  
displaced in  
Lebanon



23,850

migrants  
internally  
displaced

## OPERATION OVERVIEW



32.46M

USD required under  
emergency appeal  
(17% funded)



400,000

people targeted by IOM



16,488

people assisted by IOM  
between 1-14 November  
2024



52,345

people assisted by IOM  
since October 2023

## RESPONSE HIGHLIGHTS

As of 13 November, IOM has identified 881,326 IDPs, including an estimated 23,850 migrants who have been forced to flee their homes and workplaces. Approximately 21 per cent of IDPs are staying in collective shelters, mostly in schools or other public or private spaces. IOM coordinates the Site Management and Coordination sector with UNHCR, working to strengthen the capacity of government, UN, and other partners to manage these collective shelters and ensure timely assistance, protection, and essential services. During the reporting period, IOM visited 27 sites to meet the site focal points and conduct assessments, mapping key needs, gaps, and the presence of other organizations providing services. Through IOM's response, 5,654 individuals received protection services during the reporting period, including mental health and psychosocial support, case management, legal aid, and cash assistance. IOM also provided 8,627 core relief items (CRI)—such as blankets, mattresses, pillows, and solar lamps—to displaced families, along with 10,297 additional CRIs to partners to support their life-saving assistance efforts. During the reporting period, IOM also facilitated transportation to primary healthcare centers and provided health consultations and awareness sessions for 1,994 individuals. IOM also provided 21,979 medication, medical supplies and 7,500 litres of fuel to the Ministry of Public Health. IOM estimates that between 6,000 to 10,000 migrants need return assistance, based on requests from embassies, authorities in countries of origin, and migrants themselves. In close coordination with embassies and Lebanese authorities, IOM is supporting migrant returns and working to mobilize additional funding for these efforts. In the last two weeks, IOM has assisted 213 migrants to return to their countries of origin, including through commercial flights and one charter flight to Bangladesh.

# LEBANON EMERGENCY RESPONSE



ACTIVITY UPDATE #3 01 - 14 NOVEMBER 2024

## RESPONSE ACHIEVEMENTS - CUMULATIVE SINCE OCTOBER 2023



### BASIC ASSISTANCE

**33,595** individuals received core relief items.



### PROTECTION

**11,502** individuals provided with case management, MHPSS, legal aid, and emergency cash.



### SUPPORT TO PARTNERS

**28,378** core relief items delivered to partners.  
**69,483** bags of bread delivered to partners.



### MOVEMENT ASSISTANCE

**220** people assisted with return support.  
**436** refugees assisted with resettlement support between 1-14 November 2024.



### HEALTH

**7,028** individuals provided with transport to primary healthcare centers, health consultations and health awareness sessions.  
**51,000** medical supplies delivered to health facilities, health providers, and the Ministry of Public Health.  
**41,500** litres of fuel provided to Ministry of Public Health.



### SITE MANAGEMENT AND COORDINATION

**256** sites monitored by IOM.  
**5** mobile teams deployed.  
**27** sites assessed for needs and service provision between 1-14 November 2024.

## DISPLACEMENT TRACKING MATRIX

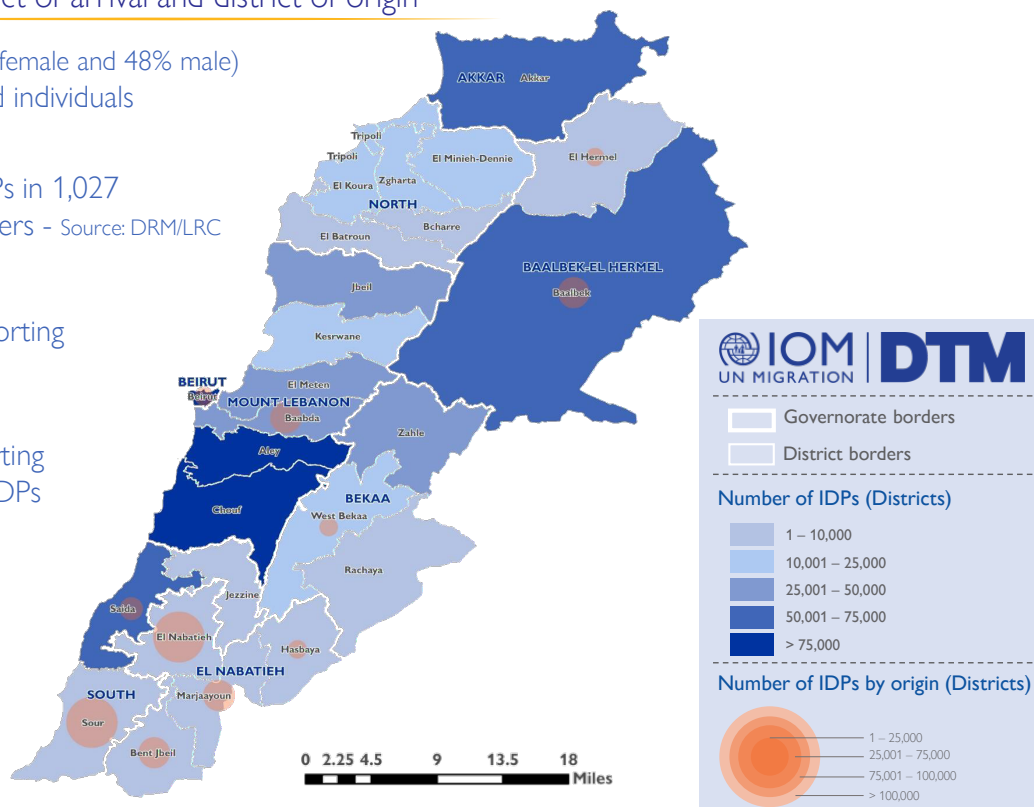
### IDPs by district of arrival and district of origin

**881,326** (52% female and 48% male)  
Total displaced individuals

**187,269**  
Registered IDPs in 1,027  
collective shelters - Source: DRM/LRC

**914**  
Cadasters reporting  
arrival of IDPs

**14**  
Districts reporting  
departure of IDPs



This map is for illustration purposes only. Names and boundaries on this map do not imply official endorsement or acceptance by IOM.

