

LEBANON EMERGENCY RESPONSE



ACTIVITY UPDATE #4 15-28 NOVEMBER 2024

SITUATION OVERVIEW

Since mid-September 2024, displacement has increased dramatically, from 110,000 people between October 2023 and September 2024 to nearly 900,000 by 24 November 2024. A ceasefire agreement took effect at 4 a.m. on 27 November, prompting nearly 580,000 internally displaced persons to begin returning home, mainly to the South, as reported in [IOM's Flash Update](#).

As of 28 November, 22,214 internally displaced persons remain in 396 collective sites, mostly schools or other public or private spaces. The post-ceasefire situation

remains uncertain. IOM is closely monitoring mobility trends, assessing the evolving context, and continuing to address the immediate humanitarian needs of those affected by the conflict, including returnees.

In support of the government-led emergency response, the humanitarian community launched an interagency flash appeal for USD 426 million to assist 1 million people until December 2024. IOM requires USD 32.46 million for urgent lifesaving assistance in the areas of shelter, basic needs, health, protection, site management and coordination, and the Displacement Tracking Matrix.

OPERATIONAL OVERVIEW



RESPONSE HIGHLIGHTS

During the reporting period, IOM assisted a total of 7,539 individuals. IOM assessed 71 collective sites and continued to provide targeted protection services to displaced people, including the estimated 26,000 migrants who have been forced to flee their homes and places of work. IOM supported 1,322 individuals with protection services, 1,176 with health services, and

provided core relief items, such as blankets, mattresses, and pillows, to 4,805 IDPs. Additionally, IOM delivered 2,920 medical supplies and 2,400 liters of fuel to the Ministry of Public Health. IOM is also continuing evacuation assistance in coordination with embassies, having assisted 236 migrants with their return.

RESPONSE ACHIEVEMENTS SINCE OCTOBER 2023



BASIC ASSISTANCE

38,703 individuals received core relief items



PROTECTION

12,824 individuals received protection services



SUPPORT TO PARTNERS

29,678 core relief items were delivered to partners



MOVEMENT ASSISTANCE

456 migrants were assisted with return



HEALTH

8,204 individuals received health services
53,920 medical supplies were delivered



SITE MANAGEMENT & COORDINATION

98 sites were assessed by IOM

MOBILITY SNAPSHOT — Flash Update (Round 65)

IDP return movements by district



578,641
IDPs have begun returning to their communities



280
Cadasters reporting the return of IDPs



15
Districts reporting the departure of IDPs

IDPs in collective sites

Source: DRM/LRC



396
Collective sites open



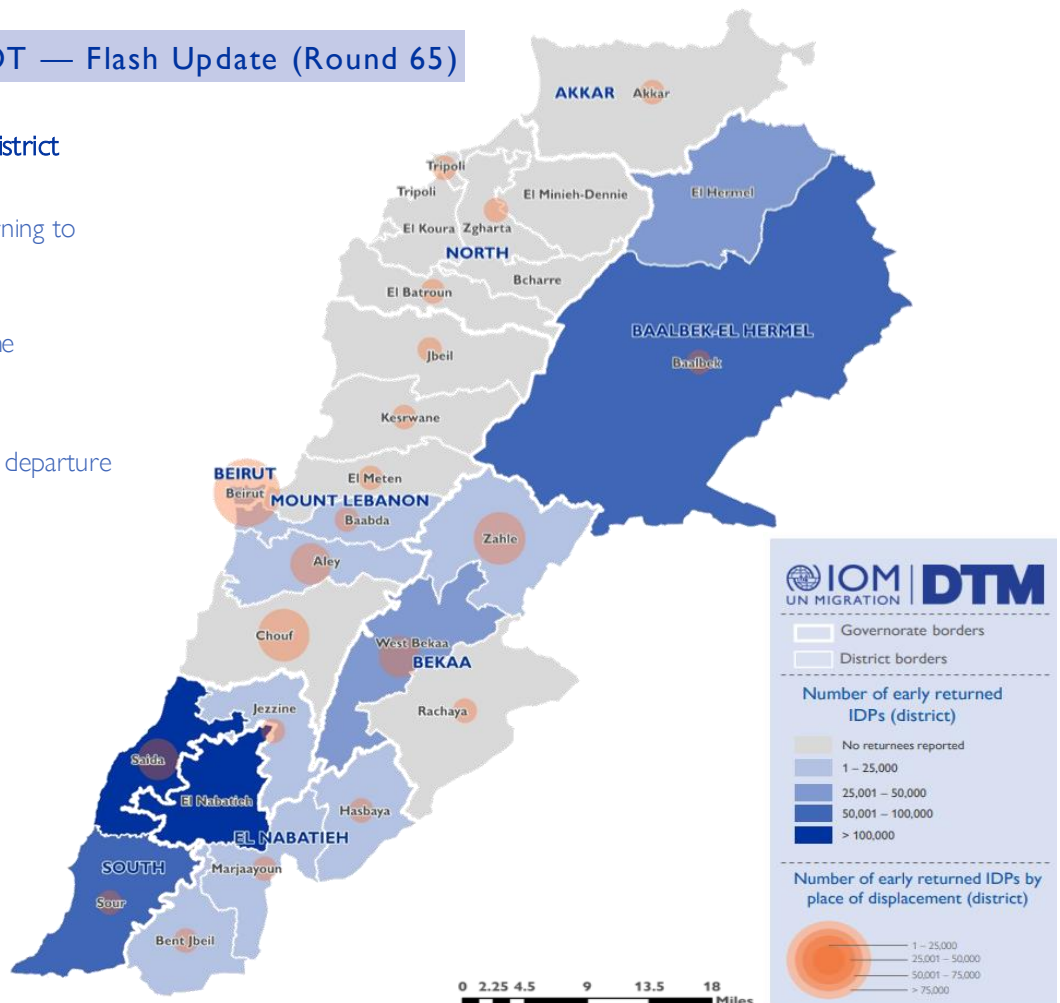
22,214
IDPs in collective sites



613
Collective sites closed



163,795
IDPs have left the collective sites



Disclaimer: This map is for illustration purposes only. Names and boundaries on this map do not imply official endorsement or acceptance by IOM.

