

# LEBANON EMERGENCY RESPONSE

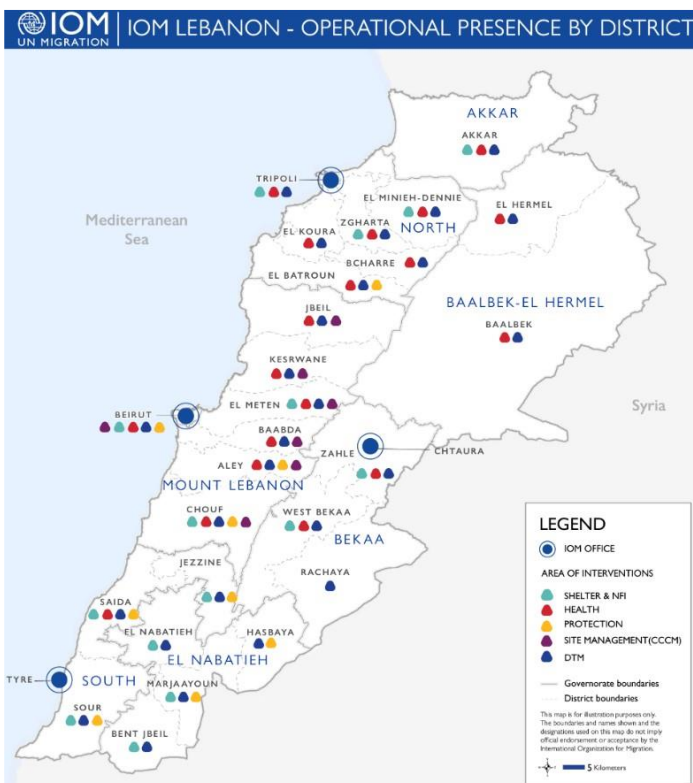
ACTIVITY UPDATE #5      29 NOVEMBER – 12 DECEMBER 2024

## SITUATION OVERVIEW

Since the ceasefire agreement took effect at 4 a.m. on 27 November 2024, roughly 900,000 internally displaced persons (IDPs) have begun returning home, mainly to the South ([DTM Mobility Snapshot Round 67](#)). As of 11 December 2024, IOM's DTM reported around 179,000 IDPs in Lebanon, marking an 80 per cent decrease from pre-ceasefire figures. As of 13 December, 5,417 IDPs remain in 58 collective sites (Disaster Risk Management Unit), mostly in schools or other public or private spaces.

In light of the evolving regional context, IOM is closely monitoring internal and cross-border movement dynamics, assessing changing needs, and continues to address the immediate humanitarian needs of those affected by the conflict. In support of the government-led emergency response, the humanitarian community launched an interagency flash appeal for USD 426 million to assist 1 million people until December 2024. IOM requires USD 32.46 million for urgent lifesaving assistance in the areas of shelter, basic needs, health, protection, site management and coordination, and the Displacement Tracking Matrix.

## OPERATIONAL OVERVIEW



## RESPONSE HIGHLIGHTS

During the reporting period, IOM assisted a total of 10,033 individuals. IOM assessed 28 collective sites to continue to provide targeted protection services to displaced people, including migrants forced to flee their homes and workplaces. IOM assessed another 48 sites for light decommissioning which include public schools, technical institutes and universities.

IOM supported 4,546 individuals with protection services, 1,619 with health services, and provided core relief items, such as blankets, mattresses, and pillows, to 3,598 IDPs. Additionally, IOM delivered 4,500 litres of fuel to the Ministry of Public Health. IOM is also continuing evacuation assistance in coordination with embassies, having assisted 270 migrants with their return in the reporting period.

# LEBANON EMERGENCY RESPONSE

ACTIVITY UPDATE #5

29 NOVEMBER – 12 DECEMBER 2024



## RESPONSE ACHIEVEMENTS SINCE OCTOBER 2023



### BASIC ASSISTANCE

**43,027** individuals received core relief items



### PROTECTION

**17,370** individuals received protection services



### SUPPORT TO PARTNERS

**113,906** core relief items were delivered to partners



### MOVEMENT ASSISTANCE

**726** migrants were assisted with return since 23 September 2024



### HEALTH

**9,823** individuals received health services  
**53,920** medical supplies were delivered



### SITE MANAGEMENT & COORDINATION

**174** sites were assessed by IOM

## MOBILITY SNAPSHOT — Round 67



**178,817** (52% female and 48% male)  
Total displaced individuals



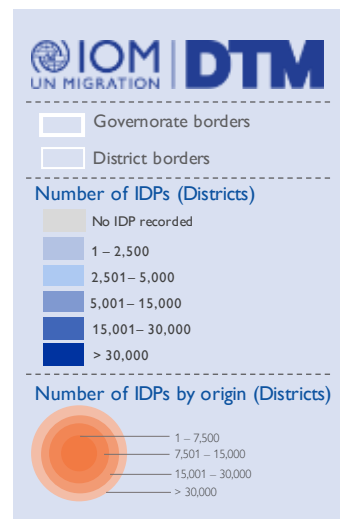
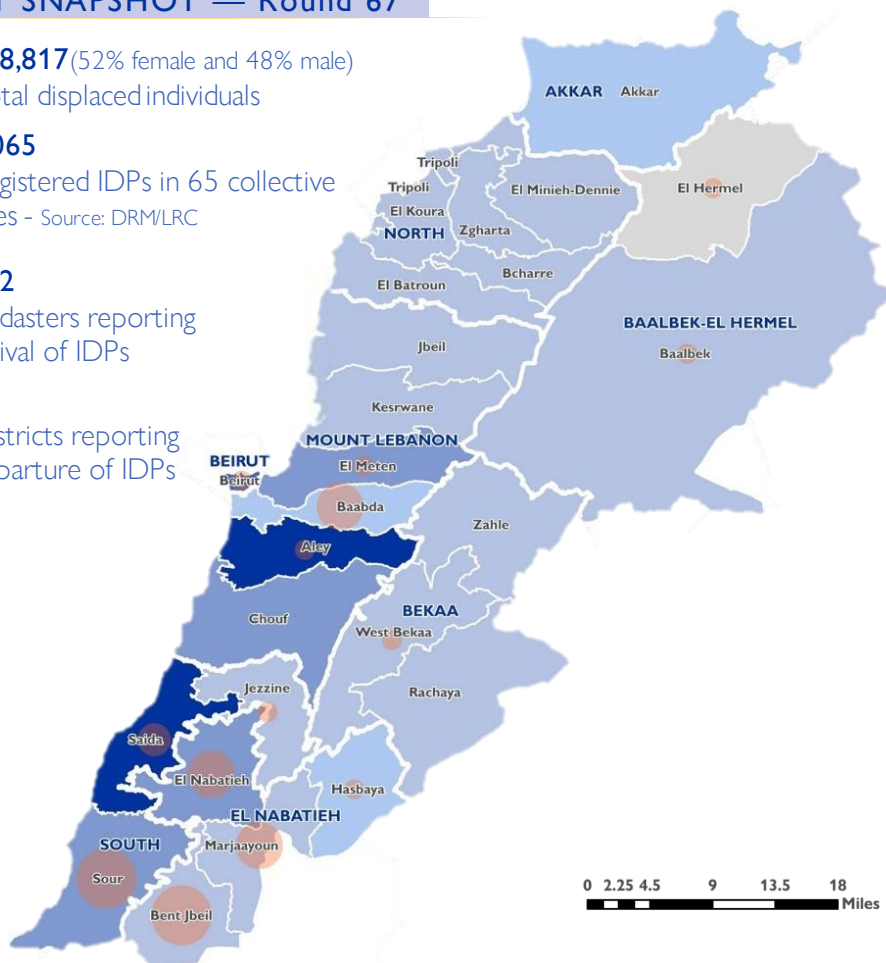
**6,065**  
Registered IDPs in 65 collective sites - Source: DRM/LRC



**482**  
Cadasters reporting arrival of IDPs



**14**  
Districts reporting departure of IDPs



Disclaimer: This map is for illustration purposes only. Names and boundaries on this map do not imply official endorsement or acceptance by IOM.



Soutenu par



Ministry of Foreign Affairs of the Netherlands