



Flooded areas in Anambra. Source: IOM 2022

IOM Flash Appeal

Flood Response in Nigeria

TOTAL FUNDING REQUIREMENT: 23.5 million
TOTAL AFFECTED INDIVIDUALS: 3 million
TOTAL TARGETED INDIVIDUALS: 1.450 million
PERIOD: 3 to 18 months

OVERVIEW

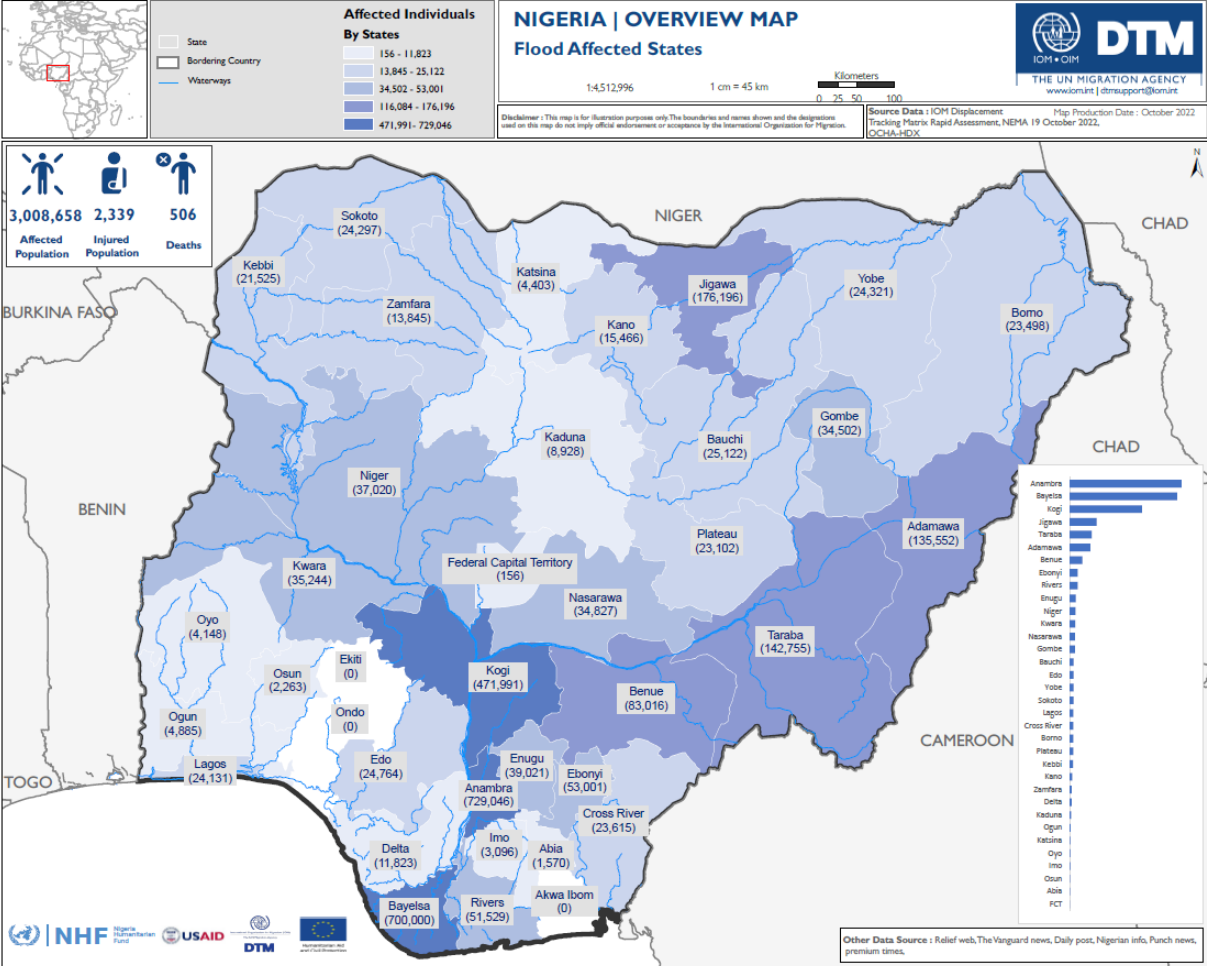
With the onset of the rainy season in Nigeria starting in June, varying degrees of damage have been reported all over the country. varying degrees of damage have been reported all over the country. The most affected areas are in the Northeast states of Borno, Adamawa, and Yobe , Bauchi, Taraba; in Benue, Kogi and Nasarawa States in the Northcentral; Jigawa in the Northwest, Bayelsa State in the South-South, and Anambra State in the Southeast of Nigeria. Heavy rainfalls, accompanied by strong winds alongside overflowing of rivers and the opening of the dam gates in Cameroon, led to the flooding of communities, causing serious damage to shelter and infrastructures within the IDP camps and host communities in the Northeast of the country. The floods destroyed farmlands, shelters, water, sanitation and hygiene (WASH) infrastructures, and sources of livelihood, and caused the further displacement of populations. Following the flooding, cases of cholera and acute watery diarrhoea (AWD) outbreaks were also reported in Northeast Nigeria. The spontaneous nature of displacement sites coupled with existing gaps in humanitarian assistance mmakes individuals extremely vulnerable to a multitude of risks such as disease outbreaks such as AWD, cholera, and other public health issues. According to IOM's [Displacement Tracking Matrix \(DTM\) Flash reports dated September 2022](#), as well as National Emergency Management Agency (NEMA) and Nigerian Red Cross (NRC) data from October 2022, a total number of **1,664,467** people have been affected in across states, while **60,720** shelters were fully damaged and nearly **33,542** shelters were partly damaged in Borno, Adamawa, Yobe, Benue, Kogi, Jigawa, Bauchi, Nasarawa, Taraba and Anambra states. Additionally, more than 600 people lost their lives, including children across the country. More than 440,000 hectares of farmland have been partially or totally damaged, leading to a catastrophic loss of food access and livelihoods, as reported by OCHA (October 2022).

Overview of states in Nigeria affected by floods

S/N LGAS	NUMBER OF PERSONS AFFECTED	NUMBER OF PERSONS DISPLACED	NUMBER OF HOUSES PARTIALLY DAMAGED	NUMBER OF HOUSES TOTALLY DAMAGED
Anambra	675,953	526,015	5,511	2,765
Kogi	206,562	200	-	-
Yobe	160,000	42,710	8,641	8,885
Adamawa	135,552	14,439	2,136	15,156
Benue	83,016	32,633	358	34
Borno	50,242	30,516	9,477	10,201
Jigawa	150,438	61,942	1,564	3,849
Bauchi	25,122	2,738	3,136	2,059
Nasarawa	34,827	22,040	381	1,689
Taraba	142,755	6,089	1,343	16,082
Bayelsa	38,442	-	25	34
Total	1,702,909	739,322	32,572	60,754

Source: National Emergency Management Agency (NEMA), 2022

In response to the flood appeal of the Federal Republic of Nigeria for assistance, IOM aims to provide humanitarian assistance in Borno, Adamawa, Yobe, Benue, Kogi, and Anambra states. This will ensure an immediate and lifesaving response to the flooding-affected communities through various programs, including provisions of shelter and non-food item (NFI) kits, protection, WASH, mental health and psychosocial support (MHPSS) and livelihoods. The response will also include common support services (access to WASH NFI and desludging of sanitation services from IOM-managed common pipeline) in host communities and internally displaced persons (IDP) camps, and cluster coordination support for partners to ensure a coordinated response.



Overview of flood-affected States, October 2022. Source: IOM DTM

IOM is already responding to the needs in BAY and Benue states as well as mobilizing resources in Anambra and Kogi states with a multi-sectoral approach in coordination with the Government and partners in the field. So far, IOM has supported 1,100 affected households through provision of 1,100 emergency shelter kits and 600 improved NFI kits. The CCCM interventions continue to protect the camps through site management activities and mitigate the flood impact by drainage, sandbagging, walling around shelters, and positioning pedestrian walkways with sandbags around wash facilities, camps, and shelters. Over 90,000 individuals are receiving support through CCCM interventions. IOM is further promoting WASH and environmental clean-up campaigns including desludging of latrines across several local government areas. Other WASH activities to respond to the floods include construction of 100 latrines, disinfection of sanitation facilities, distribution of hygiene and cholera kits, and solid waste management across affected camps and communities. psychosocial mobile teams of MHPSS, are

providing Psychological First Aid including referrals to other services and emotional support through lay-counseling. IOM also engaged in sensitization and awareness creation on services available, protection focus messages and health and coping mechanisms through informal education sessions as part of flood response in the affected locations. IOM operational presence in Borno, Adamawa, Benue and Yobe states allows for an immediate emergency response, whereas in Anambra, Benue and Kogi states, IOM is mobilizing its resources.

Emergency Interventions: 3 – 6 months | 12,200,000 USD

CAMP COORDINATION AND CAMP MANAGEMENT



\$1 MILLION
400,000 INDIVIDUALS TARGETED
3 – 6 MONTHS

IOM is leading the CCCM sector in Nigeria and continues to ensure a coordinated humanitarian response in displacement settings and provide camp management support in the conflict affected areas of the BAY states. The current floods have caused exacerbated vulnerabilities in camps which are already congested. CCCM interventions will focus on ensuring a robust response aiming to address humanitarian needs while ensuring preparedness measures are in place to mitigate new risks of displacements as a result of the flooding. IOM aims to provide an immediate response to flood-affected families through site improvement and upgrades, including community engagement activities in close coordination with partners, and distribution of community and sanitation tools. These may include minor repair and strengthening of shelters against storms and flooding, site preparation and backfilling of low land areas within displacement sites that are prone to flooding. As part of CCCM community engagement pillar, IOM will build on existing structures and experiences set up in other displacement settings to support awareness/sensitization activities. IOM will further undertake community-based disaster risk reduction interventions, including sensitization to communities on flood risks, shelter maintenance, and reinforcement during the season including small-scale community-driven mitigation measures.

SHELTER AND NON-FOOD ITEMS



\$3.5 MILLION
200,000 INDIVIDUALS TARGETED
3 – 6 MONTHS

The flooding across the country has caused damage to shelter facilities, access roads, schools, and other community facilities leaving the displaced population exposed to weather elements, and in need of shelter assistance. In the next six months, in coordination with partners and the Government, IOM will support people affected by flooding through the provision of emergency shelter solutions which includes the construction of emergency shelters, the distribution of emergency shelter kits and reinforcement kits. Moreover, IOM will ensure that the affected population has access to basic non-food items (NFI). NFI kits distributed will follow the sector guidelines and standards and will consist of items such as mattresses, blankets, mats, kitchen set, rechargeable solar lamps, rope, Long-lasting insecticidal nets (LLIN).

DISPLACEMENT TRACKING MATRIX



\$2 MILLION

3 – 6 MONTHS

The Displacement Tracking Matrix (DTM) provides a better understanding of the movements and evolving needs of displaced populations thereby enabling the Federal and State Governments of Nigeria and its humanitarian partners to provide the required assistance. In Nigeria, IOM employs various tools to track displacement and returns and conducts biometric registration of beneficiaries based on displacement patterns for onward support. In response to the flooding in the country, IOM will support the Federal Government of Nigeria in collecting accurate data and offer to deploy DTM teams to conduct flood and damage assessment, return, resettlement and recovery assessments which includes assessment of damage infrastructure, affected households and individuals in the states that have been severely affected, including Benue, Nasarawa, Adamawa, Yobe, Bayelsa, Kogi, Jigawa, Kebbi, Niger, Anambra, and other flood affected States in Nigeria. This will enable and inform effective and timely response plans by partners and the government. DTM will also ensure identified key informants in state government continue to provide incident information in areas and communities not accessible at the time of the assessment to ensure information is up to date.

WATER, SANITATION AND HYGIENE



\$1 MILLION

150,000 INDIVIDUALS TARGETED

3 – 6 MONTHS

IOM's WASH programme delivers appropriate WASH interventions to displaced populations affected by crisis and other natural disasters, through direct water supply provision, access to adequate sanitation facilities, provision of emergency WASH NFIs, and awareness raising and hygiene promotion campaigns including coordination with local and international partners. The interventions are geared towards responding to the flood and cholera outbreak across Nigeria. WASH programming will support the affected population across the flooded locations and ensure they have access to the minimum requirements of water supply (emergency water trucking as required, borehole disinfection and chlorination at point and household level, water quality monitoring, minor repair and maintenance of water facilities and systems), sanitation (construction of emergency latrines, minor repair of damaged latrines and showers, desludging of existing latrines), and hygiene services (door-to-door hygiene promotion, risk communication and community engagement).

This also includes distribution of emergency WASH NFIs such as the initial hygiene kit for newly displaced populations; sanitation kits consisting of protective gloves for heavy-duty work, rain boots, dust masks, broom, shovel, reinforced wheelbarrow, basic first aid kit to support drainage cleaning and environmental sanitation; and replenishment kits consisting of laundry and bathing soap to support handwashing and personal hygiene as environmental sanitation; and replenishment kits consisting of laundry and bathing soap to support handwashing and personal hygiene as prescribed by the global and national standards. IOM will identify and train individuals from communities to carry out monitoring, maintenance, and repair of water infrastructures. Leveraging on its experience as the co-lead in managing the common services pipeline of the WASH Sector, IOM will ensure WASH NFIs will be promptly provided prioritizing most affected locations that have not received any form of assistance since the onset of the disaster.



Flooded residential area in Anambra. Image: IOM 2022

CASH-BASED INTERVENTIONS



\$2 MILLION

90,000 INDIVIDUALS TARGETED

3 – 6 MONTHS

Multipurpose cash assistance will allow flood-affected populations to meet their urgent needs. Many beneficiaries prefer cash transfers due to their empowerment effect – allowing recipients to decide how to prioritize and meet their most critical needs, thereby enhancing independence and dignity. IOM will conduct an assessment to identify the most pressing needs of the affected population in restoring their lives and livelihoods. However, considering experience with the Cash Working Group and other partners, the intended multipurpose cash assistance is expected to cover food security (food items), food security plus (vegetables), education, health, communication and transportation.

EMERGENCY HEALTH



\$1.5 MILLION

150,000 INDIVIDUALS TARGETED

3 – 6 MONTHS

IOM will support persons living in flooded communities by strengthening provision of emergency health services in IDP camps and affected host communities through procurement and distribution of medicine and medical supplies, provision of infection prevention and control measures for waterborne diseases

including personal protective equipment, and capacity building for health care workers and community health volunteers. IOM will also deploy mobile health clinics to provide additional outreach and provision of emergency health care and referrals for specialized care.

PROTECTION - MENTAL HEALTH AND PSYCHOSOCIAL SUPPORT



\$700,000
100,000 INDIVIDUALS TARGETED
3 – 6 MONTHS

IOM has been a key partner providing MHPSS services and has in partnership with national institutions worked to improve the psychosocial well-being of displaced populations across the Northeast. The following activities will be conducted in the flood affected states: provision of psychosocial support to the affected population including gender-based violence (GBV) survivors and victims of abuse, as well as conduct mobile protection and MHPSS community-based activities including the provision of Psychological First Aid, referrals to other services, awareness raising and emotional support through IOM’s psychosocial mobile teams. Furthermore, IOM will distribute material assistance such as dignity kits for women and girls of reproductive age and assorted items for most vulnerable individuals including GBV survivors and victims of trafficking with protection focused messages on leaflets. IOM will also undertake orientation sessions for the community-based structures community engagement on how to respond to, disclosure of GBV, and trafficking in persons. MHPSS protection team will also coordinate with other sectors to ensure flood response interventions will be focused on risks risk reduction, mitigation measure prioritize for safe programming and gender-specific needs addressed throughout all activities. IOM MHPSS will also coordinate with other sectors to ensure flood response interventions will be focused on risks risk reduction, mitigation measure prioritize for safe programming and gender-specific needs addressed throughout all activities. As part of supporting the MHPSS coordination, IOM is co-chairing the MHPSS sub-working group with the Borno State Ministry of Health (SMoH) where the coordination of MHPSS activities takes place ensuring information sharing between non-governmental organizations (NGOs), INGOS and humanitarian partners, the adherence to relevant standards and guidelines, and the efficient use of resources among partners. As part of capacity building, workshops are organized for the national institutions and NGOs to ensure sustainability of the MHPSS response in north-east Nigeria. During the flood response the working group will carry out the coordination activities with various MHPSS partners and Government counterparts, to establish and strengthen the mechanism of MHPSS responses to the flood response including organizing meetings in coordination with government, round table discussions and provide technical support for partners providing psychosocial support.

CCCM, SHELTER, AND NFI SECTORS



\$500,000

IOM as the co-lead for the Shelter and NFI sector will ensure a well-coordinated flood preparedness and response implementation through facilitation, technical support, leadership and guidance of its 13 Shelter/NFI partners to quickly mobilise, capacitate and strengthen timely shelter and NFI assistance to IDPS, returnees , host communities and flood affected populations in the Bay states. The CCCM sector as co-lead by IOM will strengthen the ongoing government and the Inter-sector contingency, flood preparedness and response planning through well-coordinated flood prevention and mitigation measures approved by the CCCM technical working group and implementation by its 21 CCCM sector partners. The CCCM, sector will ensure, site- and LGA-level rapid preparedness and response is

consistent, community first response mechanisms are reinforced, and strengthen collaboration and relations between sector partners, and Government of Nigeria focal points.



IOM staff teams conduct hygiene promotion for conflict-affected people in north-east Nigeria. Image: IOM 2022

Early Recovery Interventions: 6 – 18 months | 11,300,000 USD

LIVELIHOODS



\$2.5 MILLION

100,000 INDIVIDUALS TARGETED

6 – 18 MONTHS

As a result of the impact of floods, in addition to the immediate devastation, food insecurity, and loss of life, the loss of livelihood assets can leave a secondary legacy of economic instability, debt, and dependency. This heavy rainfall led to floods then resulted in rapid population displacement, destruction of shelters, dilapidated public infrastructure, and an estimated cropland flooded area of 747,563 hectares in the country¹. IOM has been supporting crisis-affected populations in areas related to livelihood restoration using the most appropriate need-based approaches. including public assets rebuilding employing cash for work modality, provision of livelihood assets such as livestock and farm inputs, distribution of fuel-efficient stoves and briquettes as alternative to cooking fuel and energy.

RESTORATION OF PUBLIC SERVICES



\$2 MILLION

100,000 INDIVIDUALS TARGETED

6 – 18 MONTHS

To restore public services in flood-affected communities, IOM will conduct rehabilitation work to ensure the service providing facilities such as health facilities, schools, markets etc. (through cash for work incentives) are able to function again. The rehabilitation activities will include facilities' structure and

¹ [Automated Disaster Analysis and Mapping \(ADAM Flood Event\) | Food Security Cluster \(fscluster.org\)](#)

supply of essential equipment and appliances like solar power systems adequate to operate the facility; purification equipment and WASH services such as rehabilitation/construction of water supply systems, sanitation facilities, waste management areas.

COMMUNITY RESILIENCE AND SOCIAL COHESION



\$300,000

60,000 INDIVIDUALS TARGETED

6 – 18 MONTHS

IOM follows an integrated approach aimed at strengthening social support between communities, peace building and enhancing resilience of people affected by conflict and displacement. IOM will support IDPs, returnees and host communities to regain a sense of safety, increase self-confidence and community trust, strengthen social networks and develop coping mechanism through social skills building training; family/group support sessions; culturally/socially appropriate recreational, art-based, rituals and celebrations. Peer support and mentoring actions will be prioritized to strengthen resilience and relationships, the sense of solidarity among members of a community, promote social cohesion and increase access to social capital through their social networks.

TRANSITIONAL AND DURABLE SHELTER SOLUTIONS



\$5.8 MILLION

100,000 INDIVIDUALS TARGETED

6 – 18 MONTHS

Transitional and durable assistance to flood affected people will be in the form of shelter repair kits and traditional mudbrick shelters. IOM will also provide Shelter Repair Kits to families whose houses have been partially damaged by floods and can therefore be repaired and re-occupied once the flood water recedes. Shelter repair or rehabilitation assistance will mainly focus on the repair or replacement of damaged roofs, the fixing of non-structural cracks, the addition of doors and windows and the repair or addition of floors. Technical assistance will be provided by roving IOM shelter technical supervisors, and trained carpenters will be identified, and their contacts shared with the beneficiaries. Shelter repair kits will be accompanied by cash grants to assist the returning households with payment of labour and provide flexibility to purchase additional materials that are not included in the kit. This component will be transferred as Cash in Envelope through the selected Financial Service Provider and may be provided as unconditional cash, or upon the fulfilment of a milestone in the repair activity.

IOM further plans to assist flood-affected families at the location of return transitional or durable shelter solutions. This activity will target households whose houses are completely damaged and therefore in need of new construction. The households will be provided with a transitional (temporary) shelter solution at the location of return to facilitate return, and thereafter a new shelter will be constructed. New durable shelters will be provided to families returning to pre-displacement areas though encouraging them to undertake the shelter construction by themselves (through IOM material and technical support), or by direct construction by IOM (for vulnerable families such as the aged, people living with disabilities, female-headed households etc). The mudbrick shelters are designed for one household with two rooms, built with local construction materials. The designs of shelters can be modified depending on the consultations that will be conducted with affected population, including all different groups within the population (women, girls, elderlies, persons with disabilities, etc.). Additional rooms can be allocated to larger family sizes.



\$700,000

6 – 18 MONTHS

Aside from provide direct assistance to flood-affected population, IOM will support national authorities to establish a cadre of well-trained officials able to work on enhancing national preparedness and response efforts in the event of natural or man-made disasters, adopt policy developments and introduce national coordination mechanisms. IOM will work closely with the relevant government authorities to support the establishment of a national disaster management and coordination mechanism and develop Standard Operating Procedures (SOP) for disaster risk management and response. IOM through its DTM programming will also provide technical guidance and implement capacity workshops for the relevant government national and state entities participating in the displacement or DRM mechanisms as per the national strategy on Disaster Risk Reduction to successfully implement nationally and locally owned Mobility tracking and rapid tools. This will specifically serve as an exit strategy towards the end of the DTM programming in Nigeria so that the relevant national and local counterparts and national mechanisms become self-reliant in fulfilling their data and information needs.

Contact

Head of IOM Maiduguri Sub-office
Karuppiah Vedharaniyam
kvedharaniyam@iom.int

Programme Support Unit Maiduguri
psumaiduguri@iom.int

