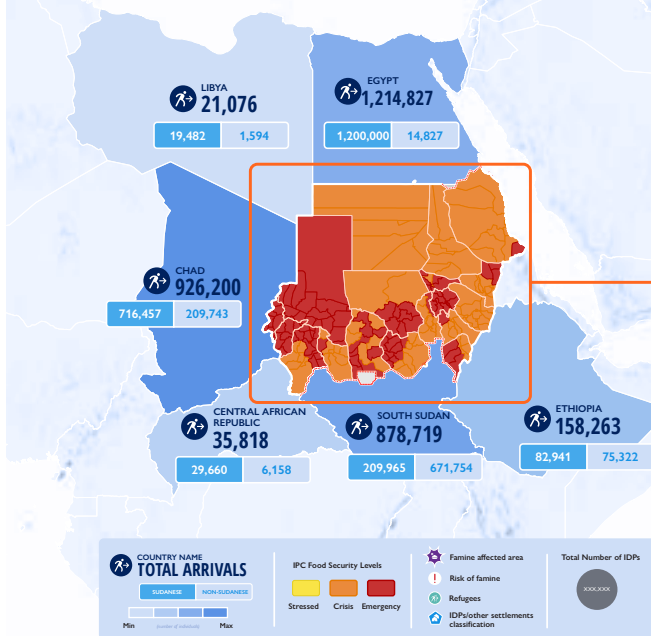
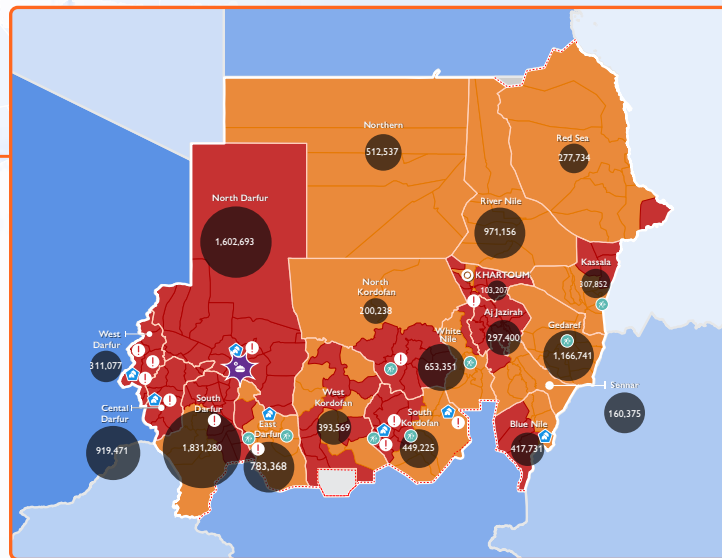


DISPLACEMENT OVERVIEW WITH INTEGRATED PHASE CLASSIFICATION (IPC) LEVELS



This map is for illustration purposes only. Names and boundaries on this map do not imply official endorsement or acceptance by IOM.

KEY FIGURES



Data as per Sudan Mobility Update 11 | International Organization for Migration (IOM), Nov 26 2024. DIM Sudan Mobility Update (11). IOM, Sudan

HIGHLIGHTS

Over the last 2 weeks:

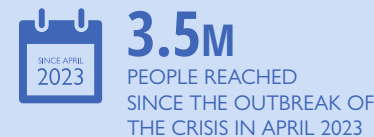
Libya: In Sudan, IOM's Rapid Response Fund (RRF) continues to provide small grants to frontline responders to enable responses in hard-to-reach areas. Over the reporting period, 56,250 individuals were assisted with primary healthcare services through the RRF in Khartoum state.

South Sudan: In South Sudan, 14,745 individuals were assisted through the provision of clean drinking water supplied to the Renk transit centre through a solar-powered Surface Water Treatment and Distribution (SWATD) system. Given the ongoing cholera outbreak in Renk, IOM is significantly scaling its WASH response to mitigate health risks.

Libya: In Libya, 1,197 individuals were provided medical consultations in eastern Libya, including Ejdabiya, Alkufra, and Al Jabal Al Akhdar.

Ethiopia: In Ethiopia, 6,436 individuals were reached through WASH activities, including water delivery through pipeline connection and the construction of sanitation facilities complemented with hygiene promotion activities.

Egypt: In Egypt, 245 individuals provided with health assistance, including through direct assistance in Giza.



SITUATION OVERVIEW

The resilience of the Sudanese people continues to be pushed to breaking point: over 11 million have been internally displaced within Sudan, 8.6 million of them following the outbreak of the crisis on 15 April 2023. With nearly 30% of the country's population having been displaced, Sudan represents the largest displacement crisis in the world.

Conflict frontlines across Sudan remain fluid – over the reporting period, IOM's Displacement Tracking Matrix issued flash alerts capturing displacement in [Ad Dali locality, Sennar](#) (290 households displaced on 16 November, most of whom sought refuge in

White Nile state) and in [Keilak locality, West Kordofan](#) (2,000 households displaced, with most seeking shelter within the state itself). The situation in Al Fasher remains tense and unpredictable, with clashes leading to the displacement of [95 households](#) on 17 and 18 November, [30 households](#) on 19 and 20 November, and [40 households](#) on 22 and 23 November. Violence continues unabated in Aj Jazirah state, with [DTM's focused flash alert](#), published 14 November, estimating that 343,473 individuals have been displaced between 20 October and 13 November 2024.



Sudan remains a dire protection crisis, with the recent violence in Aj Jazirah leading to escalating protection concerns
© IOM 2024

Priority needs amongst IDP households in Sudan included food (84%), healthcare (78%), non-food items (77%), livelihoods and income (77%), and water (67%). The lack of food leads to cascading risks in Sudan and exacerbates needs – malnutrition worsened the impact of existing health vulnerabilities, hindered ability to seek livelihoods and attend school, move in search of better access to goods and services, as well as pushed IDPs to pursue dangerous forms of labour, leading to protection risks. DTM field teams note households resorting to negative and extreme coping mechanisms, including skipping meals, eating expired or unsafe food, eating leaves or plants, and relying only on mullet husk.

Across the region, 3.2 million mixed cross-border movements have been recorded into neighbouring countries, notably Egypt (38%), Chad (29%), and South Sudan (27%); with 30% crossing borders being non-Sudanese nationals, mostly returnees. 2% of IDP households recorded by DTM intended to leave Sudan to another country, mostly Egypt (36%), Chad (20%), and South Sudan (10%).

Particularly in South Sudan, additional movements are expected over the coming weeks as per projections shared by refugees and returnees. The request from communities for additional security to make the journey from El Fula, West Kordofan to Amiet, Abyei PCA Area due to concerns of harassment, may indicate increasing vulnerability of new caseload, as well as an increasing number of households entering through Amiet. With the largest presence in Abyei PCA Area, IOM in South Sudan is well-positioned to respond to future influxes, as well as address vulnerabilities in an accurate and responsible manner.

In Sudan, [IOM is committed to stay and deliver multisectoral assistance to the people of Sudan](#). The Organization welcomes the decision by the Sudanese authorities on 13 November to allow the delivery of humanitarian aid to continue through the Adré border crossing point from Chad to Darfur for another three months. Adré is central in ensuring that humanitarian actors can reach millions of people in need of aid, particularly in the Darfur area.

While the Humanitarian Response Plan for Sudan is 59% funded, much of financial contributions have been directed to the food security and nutrition sectors. Given the cascading risks and priority needs in Sudan, balanced funding towards an integrated multisectoral response will remain key in comprehensively addressing priority needs in the country.

SUDAN



37,686
PEOPLE REACHED OVER
THE LAST 2 WEEKS



1,680,154*
PEOPLE REACHED IN 2024



2,820,941
PEOPLE REACHED SINCE THE ONSET
OF THE CRISIS IN APRIL 2023

Food insecurity in Sudan continues to decimate the country's systems and exacerbate vulnerabilities. DTM's field teams noted a continued increase in cases of malaria, cholera, diarrheal diseases, infections, and health complications linked to malnutrition. There were also reports of complications and deaths from chronic diseases among IDPs due to prolonged time without access to basic medicines and treatments. DTM teams also noted the continued need for shelter materials, particularly in the wake of an [unusually heavy rainy season that displaced nearly 190,000 individuals](#). While hopes subsided in many areas, DTM notes needs for shelter materials amongst displaced households.

During the reporting period, IOM reached:



56,250 individuals assisted with primary healthcare services in Khartoum state through the Rapid Response Fund (RRF).



6,450 individuals assisted with shelter support through the RRF, including through the provision of emergency shelter and NFIs in Merowe and Dongola in Northern state and Mornei, Kerenik and Um Tajok in West Darfur state.



30 refugees supported with resettlement assistance from Sudan to Canada in close coordination with UNHCR.

In Sudan, IOM localizes and decentralizes its response to reach displaced populations in hard-to-reach areas. In particular, the IOM-managed Rapid Response Fund supports the implementation of life-saving humanitarian responses across the country through the provision of small grants to front-line responders.

With recent SAF gains in Sennar state, public transportation has resumed between Gedaref, Sennar, Kosti, and Al Managil, and is being used by civilians to return back to Sennar. A principled, conflict-sensitive response is required, ensuring that humanitarian actors do not inadvertently create pull factors for returns. The sensitivity of returns during an active conflict necessitates a coordinated and comprehensive response across agencies.



IOM Libya supports painting of a mural to celebrate Sudanese heritage and resilience. © IOM 2024

LIBYA



2,421
PEOPLE REACHED OVER
THE LAST 2 WEEKS



46,467
PEOPLE REACHED IN 2024



79,327
PEOPLE REACHED SINCE THE ONSET
OF THE CRISIS IN APRIL 2023

During the reporting period, IOM reached:



325 individuals were provided with protection assistance, including vulnerability assessments, including for child protection and victims of trafficking, and referrals to services.



283 individuals received NFI assistance in Zwara, Tripoli, and Ejdabiya. 31 individuals received food baskets in Tripoli.



1,197 individuals were provided with health assistance in eastern Libya, including Ejdabiya, Alkufra, and Al Jabal Al Akhdar.



283 individuals provided MHPSS support, including through recreational activities, psychoeducation, art-based psychosocial activities, basic counselling, remote MHPSS service-provision, psychological first aid, and PSS awareness sessions. were assisted with sessions on counselling, psychosocial awareness raising, and psychological first aid, complemented by recreational activities.



302 individuals attended awareness-raising sessions on the risks of irregular migration.

During the reporting period, IOM Libya established the Community Response Centre in Alkufra. As the agency with the largest operational footprint and presence in Alkufra, the Community Response Centre enables the further scale-up of IOM's activities in the area.

The Centre brings together a wide range of humanitarian and protection services delivered to vulnerable individuals living in urban settings including service provision and referrals to victims of trafficking and separated and unaccompanied minors. The programme's reach and flexibility make it especially valuable for new arrivals from Sudan in Alkufra, who often experience harsh conditions in remote and difficult-to-access locations.

The needs for NFIs for those in Alkufra and for those residing in various locations, including in open areas, remain high. Winter items are particularly needed, including high-thermal blankets, sleeping bags, winter boots, and winter jackets.

In addition to providing emergency assistance, IOM in Libya continues to support livelihood and resilience activities for Sudanese in Libya. In particular, IOM is expanding its technical and vocational education and training (TVET) programmes, to enhance the access of Sudanese to market opportunities.

CENTRAL AFRICAN REPUBLIC



1,145
PEOPLE REACHED IN 2024



4,599
PEOPLE REACHED SINCE THE ONSET
OF THE CRISIS IN APRIL 2023

Per the DTM Sudan Mobility Update 11, published 26 November, 35,818 individuals were displaced from Sudan into the Central African Republic; 29,660 of them being Sudanese and 6,158 non-Sudanese.

CHAD

2024
111,895
PEOPLE REACHED IN 2024

2023
139,112
PEOPLE REACHED SINCE THE OUTBREAK
OF THE CRISIS IN APRIL 2023

Per the DTM Sudan Mobility Update 11, published 26 November, 926,200 were displaced from Sudan into Chad; 716,457 of them being Sudanese and 209,743 non-Sudanese.

With its hub in Farchana, IOM is serving the interagency cross-border response following the extension of the use of the Adré border crossing point by humanitarian actors for an additional three months. As IOM continues to scale its cross-border delivery of aid, preparedness measures in Chad are being reinforced in parallel. As such, the expansion of cross-border infrastructure in Chad will serve both cross-border operations and response on the Chad side, benefitting returnee and host communities in the eastern parts of the country, and with a view to the challenges of the seasonal flooding in the area.

*The increase since last reporting includes beneficiaries counted outside the reporting period due to ongoing data validation processes.




EGYPT

2 LAST WEEKS
144
PEOPLE REACHED OVER
THE LAST 2 WEEKS

2024
9,324
PEOPLE REACHED IN 2024

2023
54,990
PEOPLE REACHED SINCE THE ONSET
OF THE CRISIS IN APRIL 2023

During the reporting period, IOM reached:

-  **245 individuals provided health assistance** including direct assistance to Sudanese in Giza.
-  **144 individuals** were provided with multipurpose cash assistance as part of IOM Egypt's direct assistance.
-  **5 individuals were provided with food vouchers in Aswan in coordination with Caritas.**




SOUTH SUDAN

2 LAST WEEKS
3,642
PEOPLE REACHED OVER
THE LAST 2 WEEKS

2024
112,496
PEOPLE REACHED IN 2024

2023
253,719
PEOPLE REACHED SINCE THE ONSET
OF THE CRISIS IN APRIL 2023

Per the DTM Sudan Mobility Update 11, published 26 November, 878,719 individuals were displaced from Sudan into South Sudan; 206,965 of them being Sudanese and 671,754 non-Sudanese.

-  **3,642 were supported with Onward Transportation Assistance (OTA).** The provision of responsive, protection-oriented transportation assistance is central in decongesting border areas and reducing pressure in transit sites. IOM thus aligns with the priority of the United Nations Mission in South Sudan (UNMISS) to avoid the creation of new camps for displaced people, particularly in border areas, due to limited resources to establish permanent sites.
-  **3,041 individuals were provided with protection assistance,** including cash for protection for those facing individual protection risks, referrals to specialized services, and community awareness raising sessions on GBV and PSEA held in Upper Nile and Unity states.
-  **14,745 individuals were assisted through the provision of clean drinking water** supplied to the Renk transit centre through a solar-powered Surface Water Treatment and Distribution (SWATD) system.







ETHIOPIA

2 LAST WEEKS
3,540
PEOPLE REACHED OVER
THE LAST 2 WEEKS

2024
59,978
PEOPLE REACHED IN 2024

2023
155,048
PEOPLE REACHED SINCE THE ONSET
OF THE CRISIS IN APRIL 2023

During the reporting period, IOM reached:

-  **3,540 health screenings were conducted at the Metema and Kurmuk points of entry (PoE).** 507 of those screened were provided with outpatient department (OPD) consultations.
-  **7,579 individuals** benefitted from health promotion activities on communicable and non-communicable diseases.
-  **956 individuals were provided MHPSS services.**
-  **158 individuals** benefitted from services in MRCs, which included screening, temporary shelter, food, water, and the provision of sanitary and hygiene kits.
-  **52 women at Metema and Kurmuk PoEs** benefitted from sexual and reproductive services provided by IOM; 16 emergency cases were referred for specialized services.
-  **6,436 individuals** were reached through WASH activities, including water delivery through pipeline connection and the construction of sanitation facilities complemented with hygiene promotion activities.



IOM's hub in Farchana, Chad, supports cross-border operations into Darfur to assist those in need.
© IOM 2024

IOM ACTIVITIES ARE SUPPORTED BY:



From the People of Japan



Funded by European Union Humanitarian Aid



Funded by the European Union



FOR MORE INFORMATION ON THE SUDAN CRISIS RESPONSE

