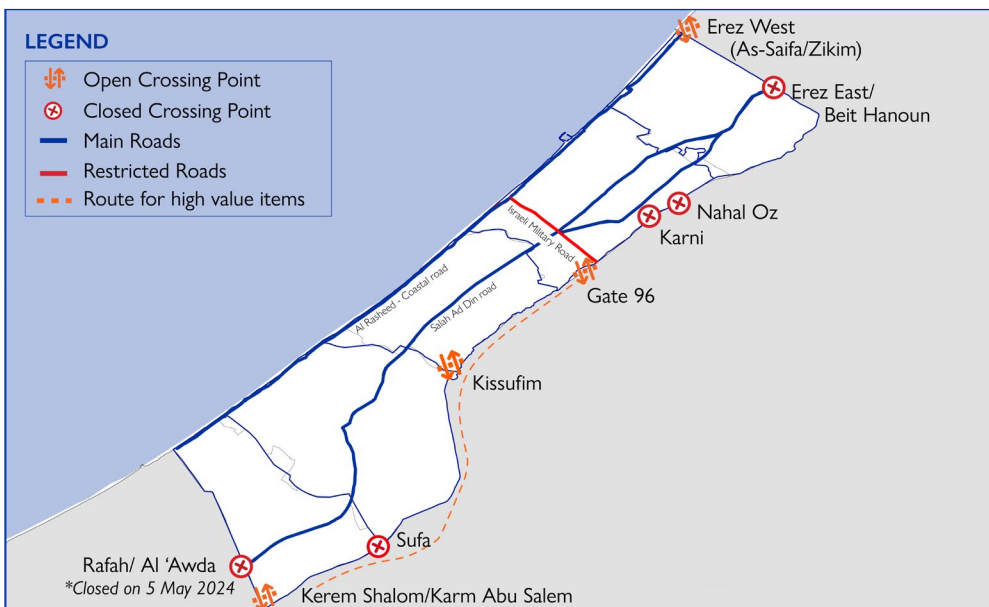
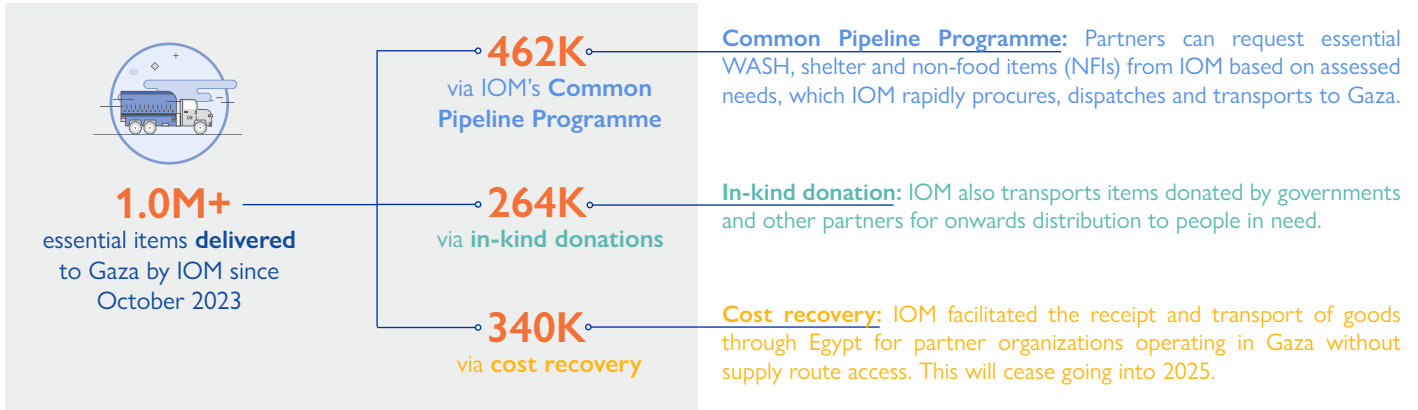


OCCUPIED PALESTINIAN TERRITORY EMERGENCY RESPONSE

ACTIVITY UPDATE #39 15 NOVEMBER - 31 DECEMBER 2024

DELIVERING ESSENTIAL AID TO GAZA



COMMON PIPELINE PROGRAMME



Disclaimer: This map is for illustration purposes only. Names and boundaries on this map do not imply official IOM endorsement/acceptance.

SITUATION OVERVIEW

Evacuation orders are in effect for about 80 per cent of the Gaza Strip, leaving civilians exposed to the dangers of hostilities and deprived of access to essential services. North Gaza remains under a “near-total siege” while 1.7 million people in central and southern Gaza face severe supply shortages. The delivery of life-saving aid across Gaza “is grinding to a halt” amid a surge in armed looting targeting humanitarian convoys. November saw a daily rate of 65 trucks entering Gaza, far below needed levels, and 90 per cent of aid trucks entering Kerem Shalom/Karm Abu Salem (98 of 109) were looted. On 1 December, UNRWA paused the delivery of aid through Kerem Shalom/Karm Abu Salem, the main crossing point for humanitarian aid into the Gaza Strip, due to a total breakdown of law and order. Heavy rains and cold weather further deteriorate the survival conditions of displaced families, with tents flooded and damaged, and at least five newborns having reportedly died of hypothermia. Shelter and WASH items need to be prioritized. Safe, rapid, unimpeded and sustained humanitarian access is urgently needed to meet the rising needs of nearly two million Palestinians in Gaza.

IOM RESPONSE

IOM is utilizing its extensive logistics networks to transport essential aid into Gaza. Once there, aid is distributed to those in need through partners operating on the ground. Supplies have been made available through a variety of channels, including bilateral partnerships, in-kind donations and IOM's Common Pipeline Programme, which is a resource available to all qualified organizations. Entering 2025, IOM will continue to scale up its Common Pipeline Programme and bring new partners on board.

OCCUPIED PALESTINIAN TERRITORY EMERGENCY RESPONSE

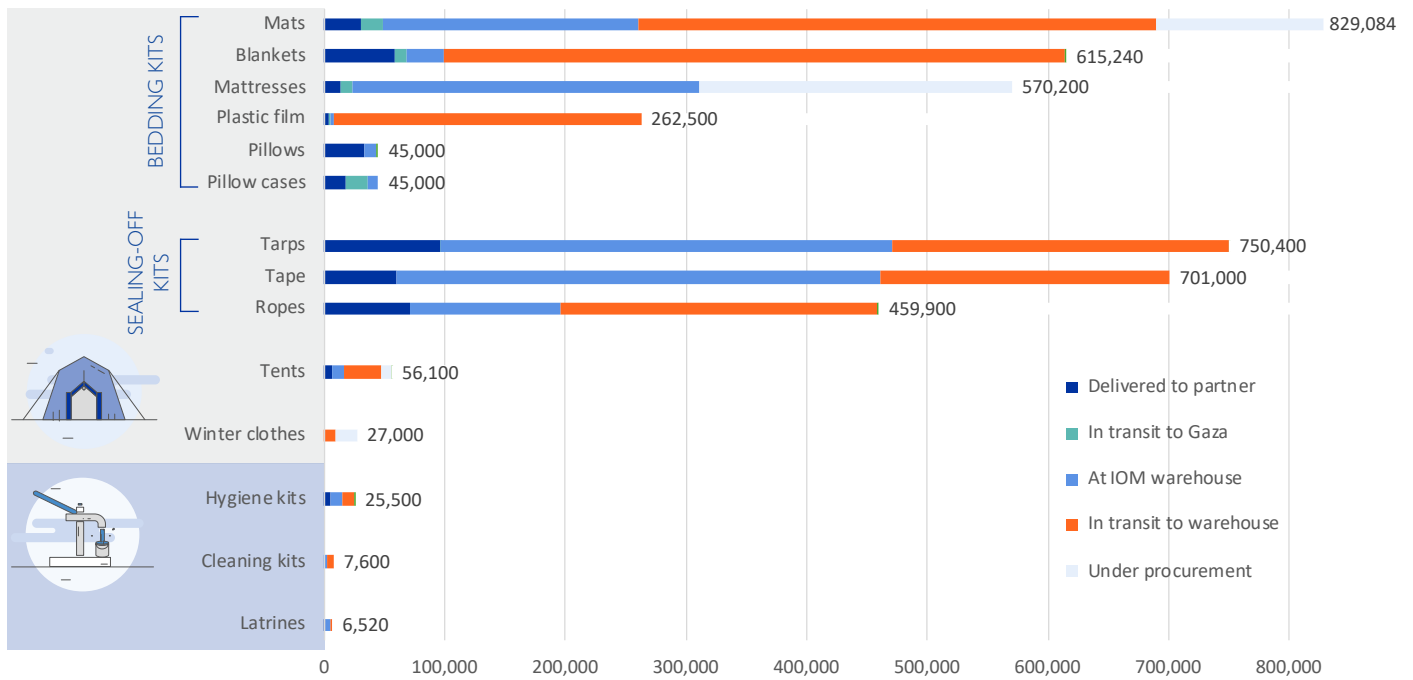
ACTIVITY UPDATE #39 15 NOVEMBER - 31 DECEMBER 2024

RESPONSE HIGHLIGHTS

IOM's winterization plan for Gaza addresses the urgent needs of people facing harsh winter conditions, as temperatures drop below 5°C and [deaths of hypothermia](#) begin to be reported. IOM supports partners on the ground with the delivery of life-saving aid through the Common Pipeline Programme to increase access to safe shelter, water and well-managed sites. With the ongoing access constraints, all shelter and WASH items were received by partners in northern Gaza city during the reporting period, through the Jordan corridor. Efforts are currently under way to find alternative routes to meet the growing needs in the south. IOM continues to advocate for an increased volume of aid through all entry points and sustained humanitarian access to deliver assistance.

ITEM BREAKDOWN

Data in this table represents all Common Pipeline Programme items for affected populations in Gaza at all logistical stages, cumulative since October 2023.



IOM's OPT Response is made possible through support from

