

LEBANON EMERGENCY RESPONSE



ACTIVITY UPDATE #6 13-31 DECEMBER 2024

SITUATION OVERVIEW

The ceasefire on 27 November has prompted 860,740 internally displaced persons (IDPs) to start returning to their communities as of 31 December, resulting in 123,774 IDPs compared to the nearly 900,000 recorded between September and November 2024.

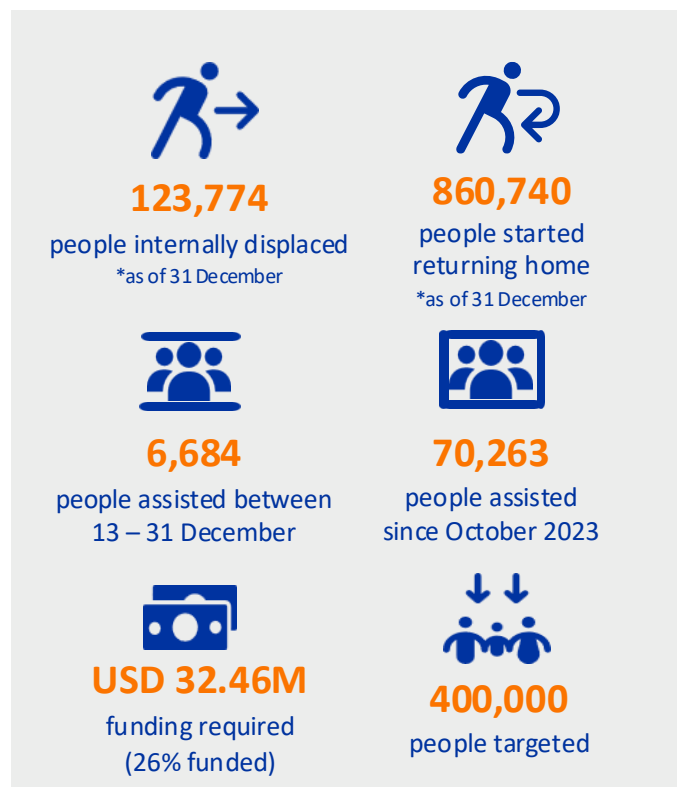
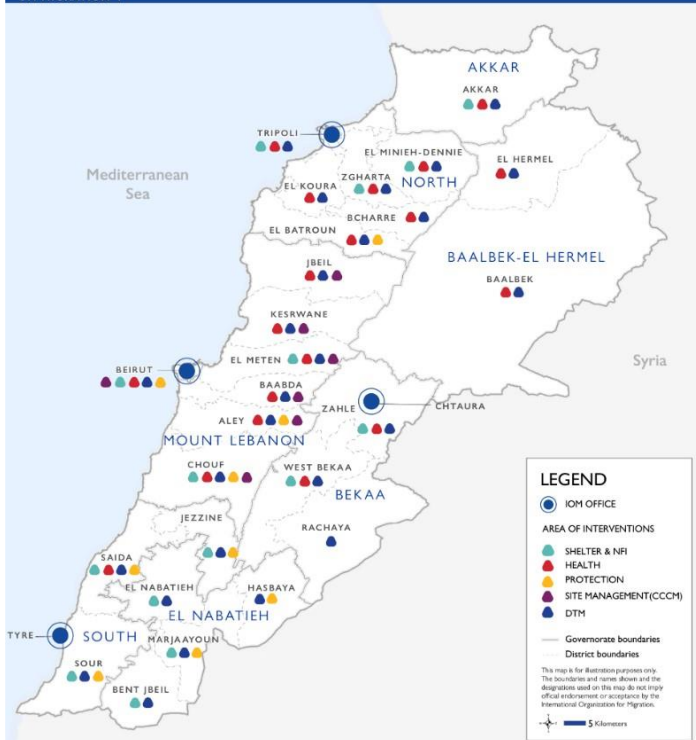
Of the 123,774 individuals remaining in displacement, 4,370 are registered in 42 collective sites, mostly schools or other public or private spaces while decommissioning assessments and works have begun to return prior collective sites to their original purpose. IOM is closely monitoring mobility trends, assessing the evolving context, and continuing to address the immediate

humanitarian needs of those affected by the conflict, including returning IDPs.

In support of the government-led emergency response, the humanitarian community launched an interagency flash appeal for USD 426 million to assist 1 million people until December 2024. IOM requires USD 32.46 million for urgent lifesaving assistance in the areas of shelter, basic needs, health, protection, site management and coordination, and the Displacement Tracking Matrix.

OPERATIONAL OVERVIEW

IOM UN MIGRATION | IOM LEBANON - OPERATIONAL PRESENCE BY DISTRICT



RESPONSE HIGHLIGHTS

During the reporting period, IOM assisted a total of 6,684 individuals. IOM assessed 38 collective sites and apartments' clusters and continued to provide targeted protection services to displaced people, including an estimated 1,000 migrants living in the targeted collective sites/apartments. IOM made 144 referrals to partners for needs mainly under Food Security & Livelihoods (18%), Basic Assistance (17%), WASH (16%) and other sectors. Site Management & Coordination (SMC) partners have also assessed 318 out of 627 schools (64%) repurposed as collective sites for decommissioning needs.

IOM supported 2,450 individuals with protection services, 1,041 with health services, and provided core relief items, such as blankets, mattresses, and pillows, to 3,166 IDPs. Additionally, IOM delivered 55,206 medical supplies and 4,700 liters of fuel to the Ministry of Public Health. IOM is also continuing evacuation assistance in coordination with embassies, assisting 27 migrants with their return during the reporting period.

LEBANON EMERGENCY RESPONSE

ACTIVITY UPDATE #6

13-31 DECEMBER 2024



RESPONSE ACHIEVEMENTS SINCE OCTOBER 2023



BASIC ASSISTANCE

47,077 individuals received core relief items



PROTECTION

11,569 individuals received protection services



SUPPORT TO PARTNERS

118,456 core relief items were delivered to partners



MOVEMENT ASSISTANCE

753 migrants were assisted with return since 23 September 2024



HEALTH

10,864 individuals received health services
109,126 medical supplies were delivered



SITE MANAGEMENT & COORDINATION

144 referrals to partners since 27 November 2024

MOBILITY SNAPSHOT — Flash Update (Round 70)



860,740

IDPs have begun returning to their communities



123,774

(53% female and 47% male)
Total displaced individuals



4,370

Registered IDPs in 42 collective shelters - Source: DRM/LRC



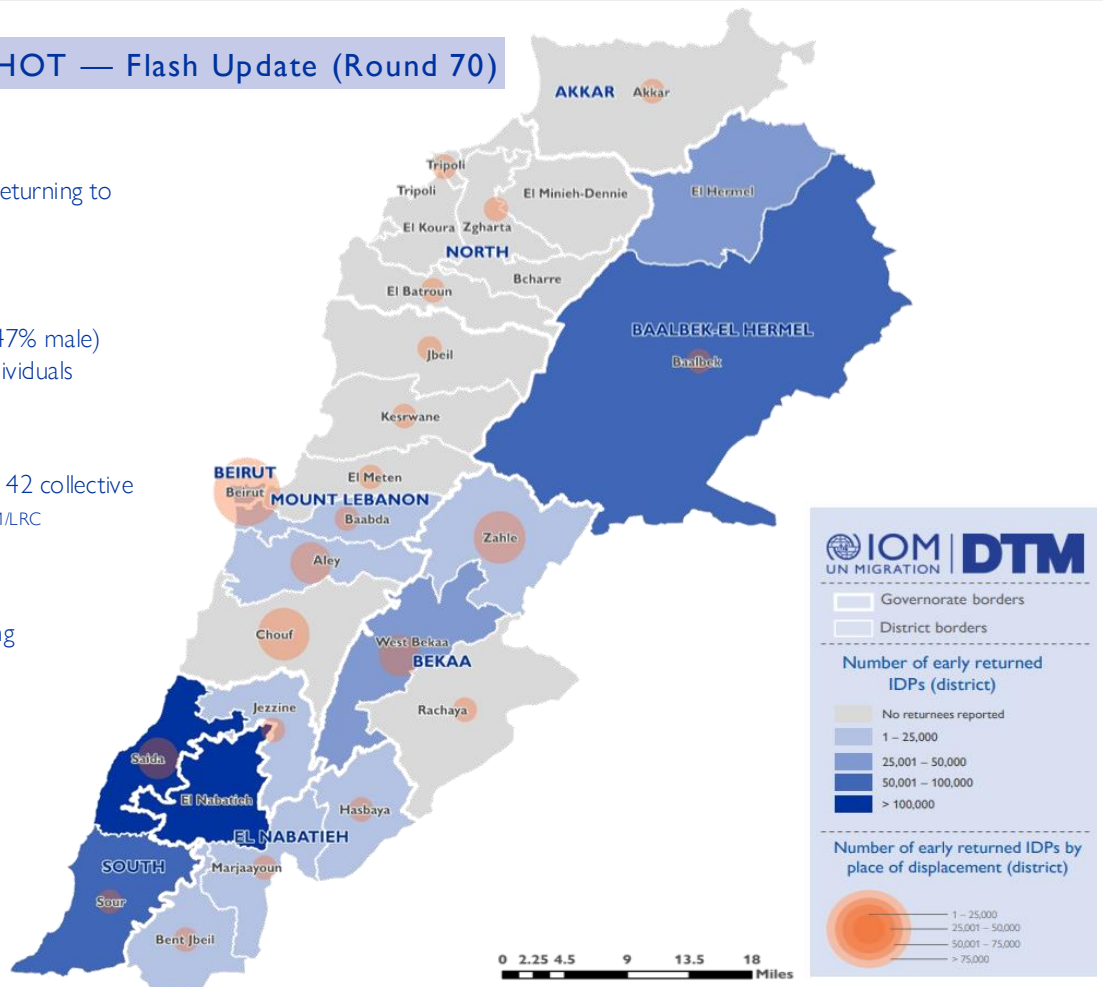
361

Cadasters reporting arrival of IDPs



13

Districts reporting departure of IDPs



Disclaimer: This map is for illustration purposes only. Names and boundaries on this map do not imply official endorsement or acceptance by IOM.



✉ beypsu@iom.int